

Enrolment Guide 2018



GOOD SHEPHERD COLLEGE
TE HEPARA PAI 

Semester One 2018

WELCOME

Good Shepherd College is open to all students who wish to study theology (and its related disciplines) in the Roman Catholic Tradition.

Students can choose to study on-campus or by-distance, full-time or part-time.

The College offers two awards:

- Bachelor of Theology Degree
- Graduate Diploma of Theology

The same selection of papers are available in both programmes of study.

Papers are taught in the following disciplines;

- Biblical Studies
- Christian Ethics
- Church History
- Humanities
- Liturgical Studies
- Pastoral Theology and Practice
- Philosophy
- Christian Spirituality
- Theology

So, if you are applying for the first time or are a returning student, whether you are looking to study in Auckland or by-distance from elsewhere, we look forward to welcoming you.



LAST EDITED 05/10/17

ENROLMENT DEADLINES 2018

	Semester 1	Semester 2
Enrolments open	18 Sept 17	23 Apr 18
Enrolments close	24 Nov 17	25 May 18
New students advised if application successful	1 Dec 17	1 Jun 18
Final date for change of course	23 Feb 18	20 Jul 18
College posts invoices	26 Feb 18	24 Jul 18
Final date for withdrawal without	2 Mar 18	27 Jul 18
Final date for payment	2 Mar 18	27 Jul 18

CONTENTS

Welcome	1
Enrolment Deadlines	1
Contents	1
What are my study options?	2
BTh Degree Planning Chart	3
GradDip Planning Chart	4
Admission Requirements	5
List of Papers Taught in 2018	6
Papers Description – Semester One 2018	
Biblical Studies	7
Christian Ethics	8
Pastoral Theology	9
Theology	10
Philosophy	12
Weekly Course Timetable	14
What papers can I study?	
Full List of Papers Taught at the College	15
Enrolment Information	18
How to Apply	18
International Students	20
Distance Students	20
Academic Expectations	22
Course Planning	23
Changing your Enrolment	23
Fees Guide	24
Academic Calendar	25
Fees Guide and Contacts	Back cover

WHAT ARE MY STUDY OPTIONS?

Bachelor of
Theology or
Graduate
Diploma

Study on-
campus or
by-distance

Study
full-time
or part-
time?

Good Shepherd College offers two awards.

1. Graduate Diploma of Theology (GradDip)
2. Bachelor of Theology (BTh)

You must be admitted to a programme to take papers. If you want to complete individual papers and are not interested in working towards a full qualification, this is not an option at Good Shepherd College.

1. GRADUATE DIPLOMA OF THEOLOGY

Must have
degree-level
qualification

Whole
award
consists
of 8
papers

1 year
minimum if
on-campus.
2 year
minimum if
by-distance

The Graduate Diploma is deliberately a very flexible award that allows any combination of papers. Refer to the planning chart on page 4.

- The whole award consists of 8 papers
- At least 1 year of full-time study or the equivalent in part-time study.
- It is an undergraduate diploma (not a postgraduate diploma).
- 5 of the 8 papers must be at stage 3.
- Papers can be selected without having the need for pre-requisites.
- Must include **T7101** Intro to Theology

Admission Requirements

Available to candidates who have already attained a degree level qualification, for example in Arts, and want to obtain a degree level qualification in Theology. It can also be added as a further qualification.

2. BACHELOR OF THEOLOGY

Must
have
University
Entrance
or be
21+ years

Whole
award
consists
of 24
papers

3 year
minimum
full-time.
Also
offered
part-time.

THE WHOLE AWARD CONSISTS OF 24 PAPERS AND REQUIRES THREE YEARS OF FULL-TIME STUDY OR THE EQUIVALENT IN PART-TIME STUDY.

Paper selection

The papers selected must satisfy the requirements of the degree on the next page.

Admission Requirements

Available to candidates who have attained university entrance or are 21 years or over.

MODE OF STUDY

Students can study either part-time or full-time. Full-time study is not available to distance students as detailed in the table.

	ON-CAMPUS	DISTANCE
<i>PART-TIME</i>	1, 2 OR 3 PAPERS PER SEMESTER	1 OR 2 PAPERS PER SEMESTER
<i>FULL-TIME</i>	4 PAPERS PER SEMESTER	NOT AVAILABLE

BACHELOR OF THEOLOGY PLANNING CHART

Discipline	CODE	COURSE UNIT TITLE	RULES
THEOLOGY	T7101	INTRODUCTION TO THEOLOGY	FIRST MAJOR 1. <input type="checkbox"/> TWO MAJORS 2. <input type="checkbox"/> COMPULSORY FIRST 1 T7101 2 T7217 3 T7231 4 5 6 MAJOR IN THEOLOGY 3. <input type="checkbox"/> 24 COURSE UNITS <i>IN THIS MAJOR:</i> 4. <input type="checkbox"/> NOT MORE THAN TWO T71XX 5. <input type="checkbox"/> AT LEAST ONE T73XX
	T7217	THE CHURCH	
	T7231	THE PERSON AND WORK OF CHRIST	
	T7324	BAPTISM AND CONFIRMATION	
	T7325	ANONING AND RECONCILIATION	
	T7326	THE EUCHARIST	
	T7327	THE SACRAMENT OF MARRIAGE	
	T7328	THEOLOGY OF PRIESTHOOD	
	T7333	THE TRINITY	
T7337	CHRISTIAN ANTHROPOLOGY AND GRACE		
HUMANITIES IN THE CHRISTIAN TRADITION	H7110	HISTORY OF THE EARLY CHURCH	SECOND MAJOR OPTION A 6. <input type="checkbox"/> COMPULSORY SECOND MAJOR. 7. <input type="checkbox"/> CHURCH HISTORY COURSE UNIT MUST BE INCLUDED 8. <input type="checkbox"/> NOT MORE THAN ONE 71XX IN THE MAJOR 9. <input type="checkbox"/> AT LEAST ONE 73XX Dc A or B SECOND MAJOR 10. <input type="checkbox"/> FOUR COURSE UNITS FROM CHRISTIAN LIFE & MINISTRY MUST BE INCLUDED. (IRRESPECTIVE OF CHOSEN MAJORS) 11. <input type="checkbox"/> MAJOR B REQUIRES 3 COURSE UNITS TO BE FROM THE SAME SUB-DISCIPLINE. i.e. - 3 codes to start WITH THE SAME LETTER
	H7240	HISTORY OF THE CHURCH IN THE MIDDLE AGES	
	H7350	THE REFORMERS AND THE REFORMATION	
	H7383	NEW ZEALAND CATHOLICS: THEIR STORY	
	W7106	ANCIENT AND EARLY MEDIEVAL PHILOSOPHY	
	W7109	MEDIEVAL & EARLY MODERN PHILOSOPHY	
	W7207	LOGIC AND CRITICAL THINKING	
	W7222	MORAL PHILOSOPHY	
	W7309	FROM DESCARTES TO KANT	
	W7310	FROM KANT TO POSTMODERNISM	
	W7331	METAPHYSICS	
	W7332	THE HUMAN PERSON	
	CHOOSE EITHER OPTION A OR B		
CHRISTIAN LIFE AND MINISTRY	S7102	INTRODUCTION TO CHRISTIAN SPIRITUALITY	11. <input type="checkbox"/> MAJOR B REQUIRES 3 COURSE UNITS TO BE FROM THE SAME SUB-DISCIPLINE. i.e. - 3 codes to start WITH THE SAME LETTER
	S7260	PRAYER AND PRAYERFULNESS	
	S7350	CHRISTIAN SPIRITUAL WISDOM	
	L7100	INTRODUCTION TO CHRISTIAN WORSHIP	
	L7200	LITURGICAL RITES	
	L7220	INTRODUCTION TO PREACHING	
	C7249	HUMAN DEVELOPMENT & PASTORAL COUNSELLING	
	P7101	INTRODUCTION TO PASTORAL THEOLOGY & MINISTRY	
	P7235	MAORI PASTORAL CARE	
	P7282	SUPERVISED MINISTRY 1	
	P7362	CANON LAW AND THE SACRAMENTS	
	P7363	SELECTED THEMES IN CANON LAW	
	P7376	THE PSYCHOLOGY OF RELIGIOUS VOCATION	
	E7100	SOURCES AND PRINCIPLES OF CHRISTIAN ETHICS	
	E7200	METHODS IN CHRISTIAN ETHICS	
	E7345	JUSTICE, HUMAN LIFE AND SOCIETY	
	E7346	MARRIAGE, FAMILY AND SEXUAL ETHICS	
	E7350	CHRISTIAN ANTHROPOLOGY & BIOMEDICAL ETHICS	
BIBLICAL STUDIES	B7110	INTRODUCTION TO BIBLICAL STUDIES	12. COMPULSORY BIBLICAL STUDIES SUB-MAJOR The sub-major needs: 13. <input type="checkbox"/> NOT MORE THAN TWO B71XX 14. <input type="checkbox"/> AT LEAST ONE B72XX
	B7214	PENTATEUCH	
	B7229	WISDOM LITERATURE	
	B7231	PROPHETIC LITERATURE	
	B7254	SYNOPTIC GOSPELS	
	B7326	PSALMS	
	B7364	PAULINE LITERATURE	
	B7368	JOHANNINE LITERATURE	
A7132	ECCLESIASTICAL LATIN		

GRADUATE DIPLOMA PLANNING CHART

Discipline	CODE	COURSE UNIT TITLE
THEOLOGY	T7101	INTRODUCTION TO THEOLOGY
	T7217	THE CHURCH
	T7231	THE PERSON AND WORK OF CHRIST
	T7324	BAPTISM AND CONFIRMATION
	T7325	ANOINTING AND RECONCILIATION
	T7326	THE EUCHARIST
	T7327	THE SACRAMENT OF MARRIAGE
	T7328	THEOLOGY OF PRIESTHOOD
	T7333	THE TRINITY
T7337	CHRISTIAN ANTHROPOLOGY AND GRACE	
HUMANITIES IN THE CHRISTIAN TRADITION	H7110	HISTORY OF THE EARLY CHURCH
	H7240	HISTORY OF THE CHURCH IN THE MIDDLE AGES
	H7350	THE REFORMERS AND THE REFORMATION
	H7383	NEW ZEALAND CATHOLICS: THEIR STORY
	W7106	ANCIENT AND EARLY MEDIEVAL PHILOSOPHY
	W7109	MEDIEVAL & EARLY MODERN PHILOSOPHY
	W7207	LOGIC AND CRITICAL THINKING
	W7222	MORAL PHILOSOPHY
	W7309	FROM DESCARTES TO KANT
	W7310	FROM KANT TO POSTMODERNISM
	W7331	METAPHYSICS
	W7332	THE HUMAN PERSON
CHRISTIAN LIFE AND MINISTRY	S7102	INTRODUCTION TO CHRISTIAN SPIRITUALITY
	S7260	PRAYER AND PRAYERFULNESS
	S7350	CHRISTIAN SPIRITUAL WISDOM
	L7100	INTRODUCTION TO CHRISTIAN WORSHIP
	L7200	LITURGICAL RITES
	L7220	INTRODUCTION TO PREACHING
	C7249	HUMAN DEVELOPMENT & PASTORAL COUNSELLING
	P7101	INTRODUCTION TO PASTORAL THEOLOGY & MINISTRY
	P7235	MAORI PASTORAL CARE
	P7282	SUPERVISED MINISTRY 1
	P7362	CANON LAW AND THE SACRAMENTS
	P7363	SELECTED THEMES IN CANON LAW
	P7376	THE PSYCHOLOGY OF RELIGIOUS VOCATION
	E7100	SOURCES AND PRINCIPLES OF CHRISTIAN ETHICS
	E7200	METHODS IN CHRISTIAN ETHICS
	E7345	JUSTICE, HUMAN LIFE AND SOCIETY
	E7346	MARRIAGE, FAMILY AND SEXUAL ETHICS
	E7350	CHRISTIAN ANTHROPOLOGY AND BIOETHICS
BIBLICAL STUDIES	B7110	INTRODUCTION TO BIBLICAL STUDIES
	B7214	PENTATEUCH
	B7229	WISDOM LITERATURE
	B7231	PROPHETIC LITERATURE
	B7254	SYNOPTIC GOSPELS
	B7326	PSALMS
	B7364	PAULINE LITERATURE
	B7368	JOHANNINE LITERATURE
A7132	ECCLESIASTICAL LATIN	

RULES

- A DEGREE AS THE ENTRY REQUIREMENT
- CONSISTS OF EIGHT PAPERS

Compulsory Paper

1 T7101 or equivalent

- TWO OTHER PAPERS CAN BE AT ANY LEVEL

Foundational Papers

2

3

HIGHER LEVEL PAPERS ARE MORE SPECIALIZED

- FIVE COURSE UNITS X73XX
GRADUATE DIPLOMA MUST HAVE
FIVE PAPERS FROM STAGE THREE

Advanced Papers

4

5

6

7

8

There is no recommended programme. Any combination of papers can be chosen provided you include T7101 and five stage 3 papers. You can begin at higher level papers without the need for pre-requisites.

The College encourages students to include some Biblical Studies papers.

ADMISSION REQUIREMENTS

This section has information on the minimum admission (or entry) requirements you need.

1. You must meet **College** admission requirements
2. You must also fulfil the criteria of the specific **programme** you choose to enrol in. i.e. Bachelor of Theology or Graduate Diploma in Theology.

PROGRAMME

ADMISSION CRITERIA

	BACHELOR OF THEOLOGY	GRADUATE DIPLOMA
STANDARD ADMISSION	University Entrance	Degree-level Qualification
SPECIAL ADMISSION	21 years of age or over	Discuss with Dean

INTERNATIONAL STUDENTS

Need to meet the following requirements:

- ❑ Sponsored by a Diocese or religious institution.
- ❑ Reside in New Zealand during their period of study.
- ❑ Completed either (1) a qualification in your home country recognised in New Zealand as the equivalent to the university entrance standard, (2) attended a secondary school in New Zealand and achieved the university entrance standard.
- ❑ Minimum of 6.5 in IELTS (at least 6.0 in each band) as evidence of English proficiency.
- ❑ Valid visa (student or work visa).
- ❑ Medical and travel insurance *if applying with a student visa*.
- ❑ Proof of identity (passport or birth certificate and 2 passport-sized photos).

COLLEGE

ADMISSION REQUIREMENTS

To be eligible to be admitted you must either:

1. Have attended secondary school in NZ and achieved the University Entrance standard.
2. If you have studied overseas or at another New Zealand tertiary institution, the College will consider your admission based on previous academic performance.
3. If you don't have a University Entrance qualification you can apply for and be granted special admission if you are:
 - 21 years or over on the first day of the semester in which you wish to begin study.
 - And a New Zealand Citizen or a New Zealand Permanent Resident.

Credit for Previous Study

You may also apply for credit for studies completed at other tertiary institutions.

NEED HELP ? Discuss your plans with the Assistant Principal, Fr Merv Duffy. duffy@gsc.ac.nz

International students may also wish to seek advice from their support person, Fr Rev Dr Brendan Daly. brendan.daly@xtra.co.nz



PAPERS TAUGHT IN 2018

2018 Semester 1
T7101 <i>Introduction to Theology</i> Rocio Figueroa
T7231 <i>The Person and Work of Christ</i> Fr Merv Duffy SM
T7326 <i>The Eucharist §</i> Rocio Figueroa
T7337 <i>Christian Anthropology and Grace</i> Sr Elizabeth Snedden RSCJ
B7110 <i>Introduction to Biblical Studies</i> Sarah Hart
W7106 <i>Ancient & Early Medieval Philosophy §</i> David Legg
W7222 <i>Moral Philosophy</i> Fr John Owens SM
W7310 <i>Kant to Postmodernism</i> Fr John Owens SM
E7200 <i>Methods in Christian Ethics §</i> Fr Bernard Teo CSsR
E7346 <i>Marriage, Family and Sexual Ethics §</i> Fr Bernard Teo
P7362 <i>Canon Law and the Sacraments</i> Msgr Brendan Daly
P7376 <i>The Psychology of Religious Vocation</i> Fr Tim Costello SM

§ = on-campus only

Special Note

- Pay special attention to the mode of study. Is the paper is being taught by on-campus only § (not by-distance).
- Check the semester the paper is being taught in. Papers are completed each semester, with two semesters a year.
- The same selection of papers is available for both the Bachelor of Theology and the Graduate Diploma, for both full-time and part-time students.
- If you want to complete individual papers but not a full qualification, this is not an option at Good Shepherd College.

2018 Semester 2
T7217 <i>The Church</i> Rocio Figueroa
T7324 <i>Baptism & Confirmation</i> Fr Merv Duffy SM
T7327 <i>The Sacrament of Marriage</i> Rocio Figueroa
B7214 <i>Pentateuch</i> Fr Kevin Waldie SM
B7326 <i>Psalms §</i> Sarah Hart
W7207 <i>Logic and Critical Thinking</i> Fr John Owens SM
W7332 <i>The Human Person</i> Fr John Owens SM
H7350 <i>The Reformers and the Reformation</i> Ann Thorp
L7220 <i>Introduction to Preaching §</i> Fr Tim Costello SM
P7101 <i>Introduction to Pastoral Theology and Ministry</i> Fr Tim Costello SM
S7350 <i>Christian Spiritual Wisdom</i> Sr Elizabeth Snedden RSCJ
A7132 <i>Ecclesiastical Latin §</i> Sr Elizabeth Snedden RSCJ

§ = on-campus only

How many papers am I able to take?

To ensure your paper selection represents a reasonable workload there are limits to the number of papers students can take each semester. Refer to the table below.

TABLE 1: MODE OF STUDY

	On-campus	Distance
<i>Part-time</i>	1, 2 or 3 papers per semester	1 or 2 papers per semester
<i>Full-time</i>	4 papers per semester	Not available

A weekly timetable outlining when lectures are scheduled is on page 14.

COURSE DESCRIPTION

Becoming familiar with the structure of the programmes and the code given to each paper will assist in selecting the right papers.

Structure of the Qualifications Offered

The basic rules on pages 3-4 are a good place to start when choosing papers. This avoids finding out later that the papers you completed do not fit programme requirements and therefore cannot be counted towards your degree or diploma.

Paper Codes

Paper codes all start with a letter that identifies the sub-discipline they belong to. For example, **B7110** is **Biblical Studies**.

All our courses are at undergraduate level i.e. Level 7, the first number e.g. **B7110**

The second number represents the different study levels. **100s** – Stage I or 1st level course, **200s** – Stage II or 2nd level course, **300s** – Stage III or 3rd level course.

The last two digits identify each paper within their subject area.

Where to start. Stage 1 papers or higher?

A **Bachelor of Theology** has pre-requisites for papers above level 1 i.e. papers that must be completed before further study in the subject area of interest can be taken. Stage 1 papers are the normal entry point to tertiary study.

The **Graduate Diploma of Theology** recognises that previous study enables the student to begin with higher-level papers without the need for pre-requisites. You can choose any combination of papers provided you include T7101 and complete 5 papers at stage 3.

BIBLICAL STUDIES

Title	INTRODUCTION TO BIBLICAL STUDIES
Code	B7110
Pre-requisite	One paper (15 NZQA credits) in Biblical Studies
Lecturer	Dr Sarah Hart BA, DipMus, D. Theol.
NZ Credit Value	NZQA NQF Level 5 (15 credits)

This stage one paper is your gateway into further studies of the inspired texts as it is a pre-requisite for later Biblical Studies courses.



Introduces students to the Bible, its content, context and literary genres and to the methodologies of biblical reading, study and interpretation. **TEXT TO BUY:** The New Oxford Annotated Bible with the Apocrypha: New Revised Standard Version edited by Michael Coogan. 4th Revised Edition. Oxford University Press

Duration: 12 teaching weeks: 19 Feb – 22 Jun
(incl breaks) **Semester One 2018**

When: Monday 10am – 12noon (double)
Thursday 2pm – 3pm

Mode of Study: Available to both on-campus and distance students.

Individual Paper Fees: NZ\$703.00 - NZ Citizen/ Resident
NZ\$715.00 - International Student

CHRISTIAN ETHICS

Title	METHODS IN CHRISTIAN ETHICS
Code	E7200
Pre-requisite	E7100
Lecturer	Fr Bernard Teo, CSsR
NZ Credit Value	NZQA NQF Level 6 (15 credits)

Title	MARRIAGE, FAMILY AND SEXUAL ETHICS
Code	E7346
Pre-requisite	E7100 or E7200
Lecturer	Fr Bernard Teo, CSsR
NZ Credit Value	NZQA NQF Level 7 (15 credits)



This unit introduces students to methods and principles of Christian ethical reflection and moral theology. It provides a methodological basis for specialised studies in Christian ethics.

Duration: 12 teaching weeks: 19 Feb – 22 Jun
(incl breaks) **Semester One 2018**

When: Friday 9am-12noon (triple)
Including breaks

Mode of Study: Available on-campus only.
No distance mode.

Individual Paper Fees: NZ\$703.00 - NZ Citizen/ Resident
NZ\$715.00 - International Student



This unit explores the human, theological and ecclesial understandings of human sexuality, and their implications for personal relationships and Christian marriage.

Duration: 12 teaching weeks: 19 Feb – 22 Jun
(incl breaks) **Semester One 2018**

When: Tuesday 10am-12noon
Tuesday 1pm-2pm

Mode of Study: Available on-campus only.
No distance mode.

Individual Paper Fees: NZ\$703.00 - NZ Citizen/ Resident
NZ\$715.00 - International Student

PASTORAL THEOLOGY

Title	CANON LAW AND THE SACRAMENTS
Code	P7362
Pre-requisite	None
Lecturer	Rev Dr Brendan Daly PhD, JCD
NZ Credit Value	NZQA NQF Level 7 (15 credits)

Canon law is a practical application of the official theology of the Catholic Church.



The course unit complements the accompanying unit in Canon Law. It demonstrates how general canonical principles and concepts apply in the area of the sacraments as these are studied in units in Systematic Theology, Liturgy and Pastoral.

Duration: 12 teaching weeks: 19 Feb – 22 Jun
(incl breaks) **Semester One 2018**

When: Tuesday 9am-10am
Wednesday 1pm-3pm (double)

Mode of Study: Available to both on-campus and distance students.

Individual Paper Fees: NZ\$703.00 - NZ Citizen/ Resident
NZ\$715.00 - International Student

Title	THE PSYCHOLOGY OF RELIGIOUS VOCATION
Code	P7376
Pre-requisite	None
Lecturer	Rev Dr Timothy Costello SM, ATCL, PhD
NZ Credit Value	NZQA NQF Level 7 (15 credits)

How to grow in a vocational commitment.



In this course unit we study the human and spiritual components of an ecclesial vocation. This gives a framework for understanding the processes relating to vocational discernment, persevering in a vocational commitment, and effectiveness in pastoral ministry.

Duration: 12 teaching weeks: 19 Feb – 22 Jun
(incl breaks) **Semester One 2018**

When: Monday 9am-10am
Thursday 9am-11am (double)

Mode of Study: Available to both on-campus and distance students.

Individual Paper Fees: NZ\$703.00 - NZ Citizen/ Resident
NZ\$715.00 - International Student

THEOLOGY

Title **INTRODUCTION TO THEOLOGY**

Code T7101

Pre-requisite P7101

Lecturer Rocio Figueroa BTh, LTh, STD

NZ Credit Value NZQA NQF Level 5 (15 credits)

Explore the relationship between faith, revelation and theology.

Title **THE PERSON AND WORK OF CHRIST**

Code T7231

Pre-requisite T7101 Introduction to Theology

Lecturer Rev Dr Mervyn Duffy SM, BSc, STD

NZ Credit Value NZQA NQF Level 6 (15 credits)

Explore the central concern of Christian theology – who Jesus is and what he did.



Christian theology is a human word which attempts to express the mystery of the dynamic interface between what is given by God and what is received by the human subject. It is a foundation paper for all future theology course units.

Duration: 12 teaching weeks: 19 Feb – 22 Jun
(incl breaks) **Semester One 2018**

When: Monday 9am-10am
Thursday 9am-11am (double)

Mode of Study: Available to both on-campus and distance students.

Individual Paper Fees: NZ\$703.00 - NZ Citizen/ Resident
NZ\$715.00 - International Student



This course unit is designed to provide students with an understanding of the person and saving work of Jesus Christ. It seeks to explore this understanding in the light of contemporary Christian thought and life.

Duration: 12 teaching weeks: 19 Feb – 22 Jun
(incl breaks) **Semester One 2018**

When: Monday 1pm-2pm
Wednesday 9am-11am

Mode of Study: Available to both on-campus and distance students.

Individual Paper Fees: NZ\$703.00 - NZ Citizen/ Resident
NZ\$715.00 - International Student

THEOLOGY

Title	THE EUCHARIST
Code	T7326
Pre-requisite	T7101 Introduction to Theology
Lecturer	Rocio Figueroa BTh, LTh, STD
NZ Credit Value	NZQA NQF Level 7 (15 credits)

This paper explores the thinking about this most mysterious and powerful sacrament that is the source and summit of Christian life.



This course unit aims to provide a comprehensive introduction to the theology of the Church. It will explore the structures of the Church, the relationship between membership of the Church and life in the world and the possibilities for the future of the Church.

Duration: 12 teaching weeks: 19 Feb – 22 Jun
(incl breaks) **Semester One 2018**

When: Monday 1pm-2pm
Wednesday 9am-11am (double)

Mode of Study: Available on-campus only.
No distance mode.

Individual Paper Fees: NZ\$703.00 - NZ Citizen/ Resident
NZ\$715.00 - International Student

Title	CHRISTIAN ANTHROPOLOGY AND GRACE
Code	T7337
Pre-requisite	One 7200 series unit in Theology
Lecturer	Sr Elizabeth Snedden RSCJ, DTheol
NZ Credit Value	NZQA NQF Level 7 (15 credits)

Explore the transforming immanence of the divine in human life.



This course unit seeks to provide students with a theological understanding of the human person and the ability to relate Christian anthropology to the theology of grace.

Duration: 12 teaching weeks: 19 Feb – 22 Jun
(incl breaks) **Semester One 2018**

When: Wednesday 11am-12noon
Thursday 11am-12noon
Thursday 1pm-2pm

Mode of Study: Available to both on-campus and distance students.

Individual Paper Fees: NZ\$703.00 - NZ Citizen/ Resident
NZ\$715.00 - International Student

PHILOSOPHY

Title **ANCIENT AND EARLY MEDIEVAL PHILOSOPHY**

Code W7106

Pre-requisite None

Lecturer David Legg PhD

NZ Credit Value NZQA NQF Level 5 (15 credits)

Philosophy sets out to ask and answer radical questions about God, the world, and human life.



The course unit starts where it all began, with the ancient Greeks, and traces the main developments of Western philosophy into the early Medieval period.

Duration: 12 teaching weeks: 19 Feb – 22 Jun
(incl breaks) **Semester One 2018**

When: Tuesday 10am-12noon
Tuesday 1pm-2pm

Mode of Study: Available on-campus only.
No distance mode.

Individual Paper Fees: NZ\$703.00 - NZ Citizen/ Resident
NZ\$715.00 - International Student

Title **MORAL PHILOSOPHY**

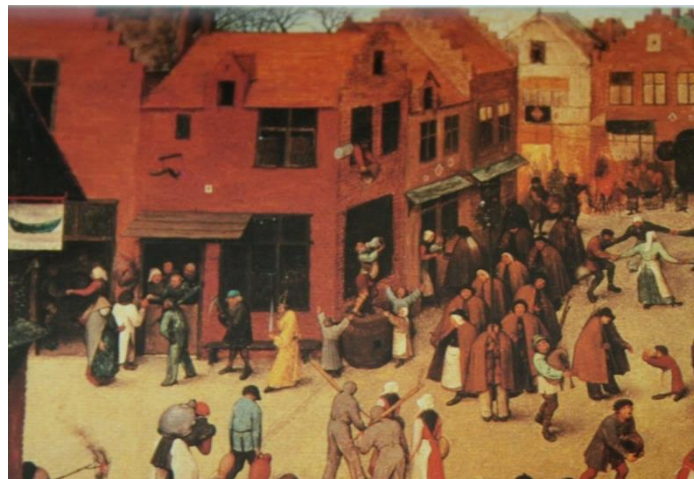
Code W7222

Pre-requisite W7106 Ancient and Early Medieval Philosophy

Lecturer Rev Dr John Owens SM, PhD

NZ Credit Value NZQA NQF Level 6 (15 credits)

How should we live? It is a question that has kept the philosophers busy.



This unit looks at the main ways in which the question has been posed in philosophical history, along with the issues that it has thrown up, and the major answers that have been offered, especially those that are relevant to Christian Moral Theology.

Duration: 12 teaching weeks: 19 Feb – 22 Jun
(incl breaks) **Semester One 2018**

When: Monday 2pm-4pm (double)
Wednesday 1pm-2pm

Mode of Study: Available to both on-campus and distance students.

Individual Paper Fees: NZ\$703.00 - NZ Citizen/ Resident
NZ\$715.00 - International Student

PHILOSOPHY

Title **KANT TO POSTMODERNISM**

Code W7310

Pre-requisite Two papers (30 NZQA credits) in Philosophy

Lecturer Rev Dr John Owens SM, PhD

NZ Credit Value NZQA NQF Level 7 (15 credits)



This unit examines the critical tradition of philosophy in the modern period that has largely defined itself over and against religion and authority. This unit provides an important background for the study of modern theology.

Duration: 12 teaching weeks: 19 Feb – 22 Jun
(incl breaks) **Semester One 2018**

When: Monday 10am-12noon (double)
Thursday 2pm-3pm

Mode of Study: Available to both on-campus and distance students.

Individual Paper Fees: NZ\$703.00 - NZ Citizen/ Resident
NZ\$715.00 - International Student

WEEKLY COURSE TIMETABLE – SEMESTER ONE 2018

	MONDAY	TUESDAY	WEDNESDAY	THURSDAY	FRIDAY
9 - 10 AM	T7101 Introduction to Theology <i>RF</i> P7376 The Psychology of the Religious Vocation <i>TC</i>	P7362 Canon Law and the Sacraments <i>BD</i>	T7326 The Eucharist <i>RF</i> T7231 The Person and Work of Christ <i>MD</i>	T7101 Introduction to Theology <i>RF</i> P7376 The Psychology of the Religious Vocation <i>TC</i>	E7200 Methods in Christian Ethics <i>BT</i>
10 - 11 AM	B7110 Introduction to Biblical Studies <i>SH</i> W7310 Kant to Postmodernism <i>JO</i>	W7106 Ancient and Early Medieval Philosophy <i>DL</i> E7346 Marriage, Family and Sexual Ethics <i>BT</i>	T7326 The Eucharist <i>RF</i> T7231 The Person and Work of Christ <i>MD</i>	T7101 Introduction to Theology <i>RF</i> P7376 The Psychology of the Religious Vocation <i>TC</i>	E7200 Methods in Christian Ethics <i>BT</i>
11 AM - 12	B7110 Introduction to Biblical Studies <i>SH</i> W7310 Kant to Postmodernism <i>JO</i>	W7106 Ancient and Early Medieval Philosophy <i>DL</i> E7346 Marriage, Family and Sexual Ethics <i>BT</i>	T7337 Christian Anthropology and Grace <i>ES</i>	T7337 Christian Anthropology and Grace <i>ES</i>	E7200 Methods in Christian Ethics <i>BT</i>
12 - 1 PM	LUNCH	LUNCH	LUNCH	LUNCH	MASS
1-2 PM	T7326 The Eucharist <i>RF</i> T7231 The Person and Work of Christ <i>MD</i>	W7106 Ancient and Early Medieval Philosophy <i>DL</i> E7346 Marriage, Family and Sexual Ethics <i>BT</i>	W7222 Moral Philosophy <i>JO</i> P7362 Canon Law and the Sacraments <i>BD</i>	T7337 Christian Anthropology and Grace <i>ES</i>	SHARED LUNCH
2-3 PM	W7222 Moral Philosophy <i>JO</i>		P7362 Canon Law and the Sacraments <i>BD</i>	B7110 Introduction to Biblical Studies <i>SH</i> W7310 Kant to Postmodernism <i>JO</i>	
3-4 PM	W7222 Moral Philosophy <i>JO</i>				

Each course has 3 hours of lectures every week, usually one single lecture and a double (2-hour) lecture - although there can be exceptions.

15 FULL LIST OF PAPERS

The full range of papers taught at Good Shepherd College follow. Not all are available in any one year. Check page 6 for papers taught this year.

HUMANITIES

A7132 Ecclesiastical Latin

Provides students with the basic grammatical and syntactical knowledge that will lead to a grasp of the Latin ecclesiastical writings.

BIBLICAL STUDIES

B7110 Introduction to Biblical Studies

Introduces the student to the Bible, its content and literary genres and to the methodologies of biblical reading, study and interpretation.

B7214 Pentateuch

As Jews and Christians have a special regard for the first five books of the Bible this paper looks at factors that influenced our understanding of them.

B7229 Wisdom Literature

Explores the place of wisdom in Ancient Israel and the theological issues it raises with than faith community.

B7231 Prophetic Literature

Examines the literary forms and theological contact of Israel's prophetic books, in their historical, cultural and religious settings.

B7254 Synoptic Gospels

Enables students to develop the ability to research in Biblical Studies through reading the Synoptic Gospels in the light of relevant contemporary scholarly literature.

B7326 Psalms

Studies Israel's poetic literature and practice of prayer and worship as represented in the Psalter.

B7368 Johannine Literature

Examines the historical context, literary forms and theological content of the Gospel and Letters of John, and their application to a range of spiritual and pastoral concerns.

CHRISTIAN ETHICS

E7100 Sources and Principles of Christian Ethics

Introduces students to theological reflection on the ethical aspects of Christian life and discipleship.

E7200 Methods in Christian Ethics

Introduces students to methods and principles of Christian ethical reflection and moral theology. It provides a methodological basis for specialised studies in Christian ethics.

E7345 Justice, Human Life and Society

Examines the ethical issues of human community, sociality and globalisation, with special focus on the requirements of social justice.

E7346 Marriage, Family and Sexual Ethics

Explores the human, theological and ecclesial understandings of human sexuality, and their implications for personal relationships and Christian marriage.

E7350 Christian Anthropology and Biomedical Ethics

Introduces the student to the ethical issues involved in contemporary medicine and health care, with a view to moral decision making in keeping with Christian principles.

CHURCH HISTORY

H7110 History of the Early Church

Provides students with an overview and general understanding of the early centuries of Christian history.

CHURCH HISTORY

H7240 History of the Church in the Middle Ages

Enables students to appreciate a wider historical context surrounding their theological studies.

H7350 The Reformers and the Reformation

Introduces students to the European Reformations of the sixteenth century as a development in history of universal importance.

H7383 NZ Catholics: Their Story

Provides a survey of the history of the Catholic Church in New Zealand and a context for other theological studies relating to the NZ Church.

LITURGICAL STUDIES

L7100 Introduction to Christian Worship

Introduces students to concepts that provide a foundation for the study of Christian worship.

L7200 Liturgical Rites

Builds on the Introduction to Worship with a particular focus on rites other than those of Christian initiation.

L7220 Introduction to Preaching

Gives a theology of preaching and introduces students to the foundational skills needed for the preparation and delivery of speeches, homilies, and sermons.

PASTORAL THEOLOGY AND PRACTICE

C7249 Human Development and Pastoral Counselling. Provides for an understanding of the physical, social, psychological and spiritual dimensions of the human life cycle through all the stages from infancy to old age.

P7101 Introduction to Pastoral Theology

Gives a biblical and theological overview of the foundations of Christian pastoral ministry with particular reference to the New Zealand context.

P7235 Maori Pastoral Care

Provides students with an understanding of and an empathy for their culture, thought patterns and religious motivations, so that they can provide pastoral ministry to Māori people.

P7282 Supervised Ministry

Incorporates learning experiences at a practical level as well as giving opportunity to reflect on both the practice and theory of ministry.

P7362 Canon Law and the Sacraments

Demonstrates how general canonical principles and concepts apply in the area of the sacraments as these are studied in units in Systematic Theology, Liturgy and Pastoral.

P7363 Selected Themes in Canon Law

Serves as the primary way of acquainting students with the canonical tradition of the Church in the non-sacramental areas of Church life.

P7376 The Psychology of Religious Vocation

Studies the human and spiritual components of an ecclesial vocation.

SPIRITUALITY

S7102 Introduction to Christian Spirituality

Develops a comprehensive introduction to, and overview of, the topic of Christian Spirituality focussing on its biblical, theological and historical premises and practice from a denominational perspective.

S7260 Formation in Prayer and Prayerfulness

Focuses on the understanding and experience of prayer as a core element within the study of Christian Spirituality.

S7350 Christian Spiritual Wisdom

Presents a survey of the major historical schools of spirituality and prayer within the Western Christian Spiritual Tradition, and explores their contribution to contemporary expression of Christian Spirituality.

THEOLOGY

T7101 Introduction to Theology

Introduces students to the nature and tasks of theology and to theological methodology. A foundation for all future theology courses.

T7217 The Church

Introduces students to a central theme of theology, viz. that faith is lived within a community of believers. It prepares students for later units in the church's sacraments and ministry.

T7231 The Person and Work of Christ

Explores the central concern of Christian theology – who Jesus is and what he did.

T7324 Baptism and Confirmation

Shows how Baptism is the first Christian sacrament and how it mediates Christian faith and Christian identity, in Christ and in the Church.

T7325 Anointing and Reconciliation

Applies the themes of sacramentality, a principal aspect of theology in the Christian tradition, to two fundamental areas of human life: sinfulness and sickness.

T7326 The Eucharist

Helps students deepen their appreciation of the connection between the doctrine of the Eucharist, worship and witness in the Christian life.

T7327 The Sacrament of Marriage

Explores marriage from the perspective of sacramental theology. It helps students to appreciate the interaction between theology, society and the human person.

T7328 Theology of Priesthood

Explores the history, theology and practice of ministry in the church in the sacrament of Holy Order.

T7333 The Trinity

Focuses exclusively on the Church's teaching on the mystery of the Holy Trinity.

T7337 Christian Anthropology and Grace

Provides students with a theological understanding of the human person and the ability to relate Christian anthropology to the theology of grace.

PHILOSOPHY

W7106 Ancient and Early Medieval Philosophy

Provides an introduction to philosophy by considering its origins in Greek philosophy and its encounter with Christian thought during the early Middle Ages.

W7109 Medieval and Early Modern Philosophy

Covers the history of thought in the West during the Middle Ages and up to Locke, and examines how and why philosophical enquiry changes during the period.

W7207 Logic and Critical Thinking

Provides structured, practical instruction in the nature of and skills of critical thinking.

W7222 Moral Philosophy

How should we live? Look at the ways in which the question has been posed in philosophical history, the issues it has thrown up, and major answers offered.

W7309 From Descartes to Kant

Covers the history of thought in the West from the time of Descartes (early 17th century) to the time of Kant (end of the 18th).

W7310 From Kant to Postmodernism

Examines the critical tradition of philosophy in the modern period that has largely defined itself over and against religion and authority.

W7331 Metaphysics

Addresses the most fundamental questions at stake in our understanding of reality in all its forms, by considering the perennial questions of being and existence, God and the human soul.

W7332 The Human Person

Examine what it is to be human, looking at major texts in philosophical anthropology, taking a variety of perspectives into account.

HOW TO APPLY

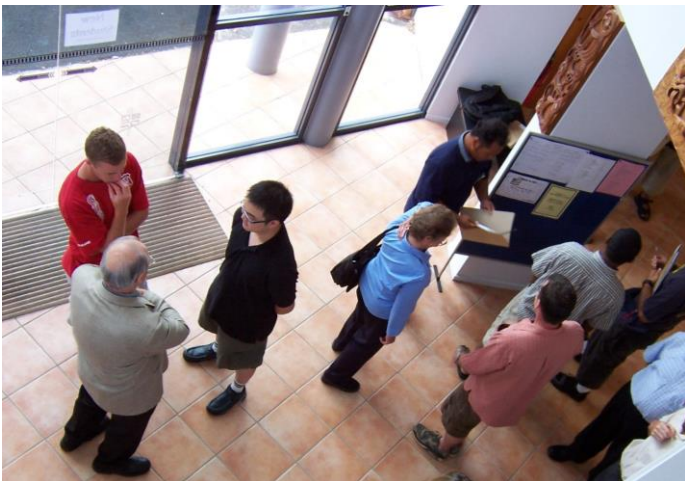
New students are required to discuss their study plans with the Acting Principal before submitting their application forms. Fr Merv Duffy can be contacted at duffy@gsc.ac.nz

Returning students enrol online in Moodle without the need to discuss with Fr Merv.

NEW STUDENTS

1. Things to consider before you apply

Choose your programme of study and papers of interest. Determine whether you meet the admission requirements.



2. Confer with the Acting Principal

You are required to confer with the Acting Principal, Merv Duffy duffy@gsc.ac.nz. You may be asked to attend an interview or to discuss your plans by email or over the phone.

3. Complete the Application Forms

Ensure you provide correct and complete information as it is the basis upon which your application will be assessed. You must complete and return all five forms:

1. Good Shepherd College application
2. Sydney College of Divinity application
3. Student Contract
4. Course Registration form
5. Student Support Questionnaire form

4. Collate Supporting Documents

It is important that you send these as soon as you complete your application forms to prove you meet admission requirements.

- ❑ Proof of identity: Passport or Birth certificate. *If the name on your application does not match the name on your birth certificate or passport you must also provide your marriage certificate or deed poll.*
- ❑ Evidence of citizenship or residency *If you are not born in NZ and you do not have a NZ passport you must provide other evidence of residency e.g. Student Visa or Work Visa.*

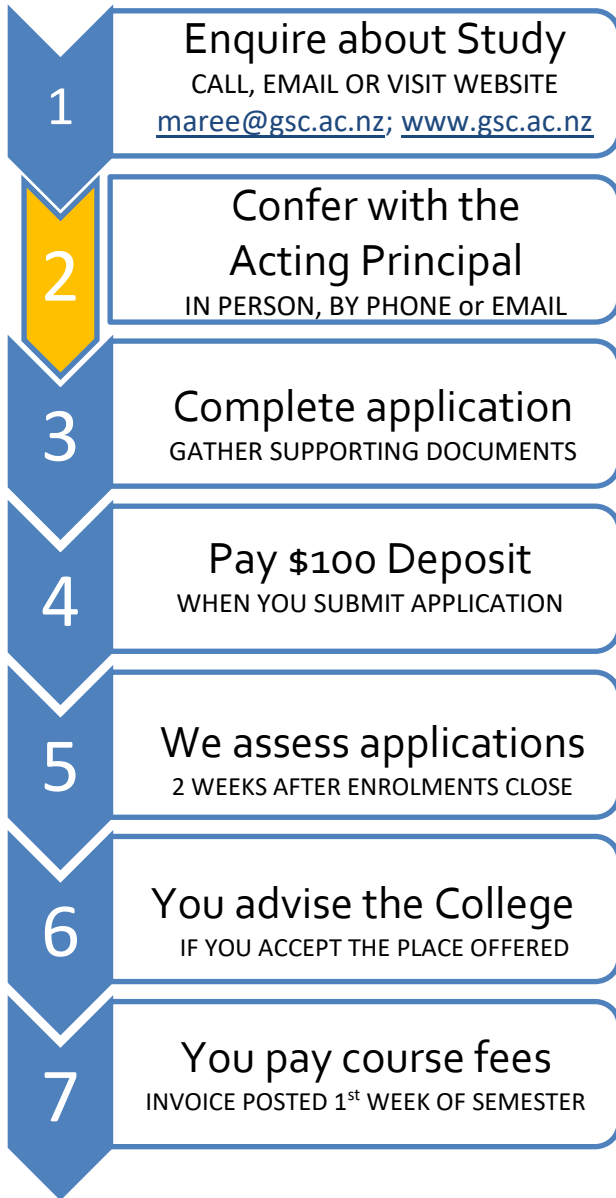


- ❑ Passport sized photograph.
- ❑ Previous Academic Transcripts *Evidence you meet admission requirements, and/or if seeking credit for previous study. If you have studied at another tertiary institution you are responsible for providing your official transcript as the College cannot request records on behalf of students.*

Have your documents certified

We only accept documents that have been certified as true copies of the original. You can either take the original document to a Justice of the Peace to have the originals witnessed, or bring the originals to Good Shepherd College where we can certify them for you.

APPLICATION PROCESS FOR NEW STUDENTS



4. Pay the \$100 Enrolment Deposit

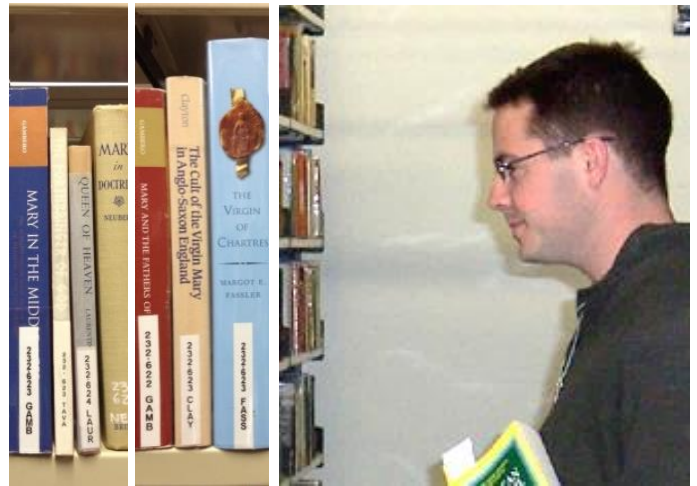
A non-refundable deposit of \$100 is payable when you submit your application. If you enrolled after the closing date a **Late Enrolment Fee** will be added to your invoice.

5. We assess your application

A week after the date that enrolments close we'll let you know if your application has been successful.

6. You pay course fees

In the first week of the semester the College posts invoices outlining total fees to be paid (including a Late Enrolment Fee if you enrolled after the closing date).



RETURNING STUDENTS

If you are returning to complete more courses **in** the same programme then you do not need to apply for admission again.

You do, however, need to enrol in your courses online at www.gsc.ac.nz/moodle2/

- Go to the Moodle Homepage page and click on the link that reads [CLICK HERE to go to the Enrolment Page](#)

If you have completed a programme and want to continue studying towards another programme, then you must complete new application forms in hard copy to change programme. You will then become an applicant for the new programme.

RETURNING SEMINARIANS

Once the College has been in contact to advise the papers you'll be taking for the semester, apply online at www.gsc.ac.nz/moodle2/ The College is unable to enrol seminarians on their behalf.

DEAN FOR HOLY CROSS SEMINARY

Sr. Carmel Walsh OP

Tel 09 361 1053 ext. 710.

Email walshca@xtra.co.nz

DEAN FOR MARIST SEMINARY

Fr. Merv Duffy SM

Tel 09 361 1053 ext. 702.

Email duffy@gsc.ac.nz

INTERNATIONAL STUDENTS IN NZ

If you are living in New Zealand, are sponsored by a Diocese or religious institution and would like to study at Good Shepherd College, get in touch with us. In addition to the **admission requirements** above there are other criteria that need to be met and these are outlined on page 5.

International student support

Mons. Brendan Daly, brendan.daly@xtra.co.nz can provide practical guidance or advice, and can help you with any issue or concern.



Code of Practice for the Pastoral Care of International Students.

Good Shepherd College has agreed to observe and be bound by the Code of Practice for the Pastoral Care of International Students.

If you have a complaint the first step is to contact Mons. Brendan Daly. While he can guide you through College procedures, a copy of Formal Complaint Procedures can be found on the Home Page of Moodle.

If your complaint is not resolved, contact the NZ Qualifications Authority. You can submit your complaint query on the NZQA website, or send an email to gadrisk@nzqa.govt.nz

DISTANCE STUDENTS

Distance learning is now done over the internet. Widespread access to the internet in New Zealand makes it fast and easy to send and receive assignments, and to access course materials.

- It is no longer necessary for course material to be posted to distance students.
- Students do not need to buy textbooks (*unless advised by the lecturer before you enrol*), as readings are available online as pdfs or e-books.



What to expect as a distance student

Good Shepherd College runs a blended learning environment which means that distance learning runs in parallel with the on-campus class.

- Distance students start and finish the semester in step with the on-campus course.
- The class follows the normal semester timetable, including breaks as outlined in the Academic Calendar.
- Papers are completed each semester.
- All students should expect to complete the course and submit assessment materials within the semester.

DISTANCE STUDENTS

Online Tutoring

The purpose of online tutoring is to provide interaction between students and the lecturer so that students' questions can be answered and interaction can occur.

The lecturer is your first point of contact for issues related to the course you are doing. He/she will guide you through what you are expected to do online each week in Moodle.

Interaction with other students

A blended learning environment also means that the group of students you interact with online may include on-campus students.

Interactivity with other students is a very important part of the learning process. This is facilitated by the forums and discussions in Moodle. You are expected to contribute your ideas and to respond to those offered by other students.

Online Attendance

It is important that you do not restrict your efforts to *graded assessment tasks* as distance students are required to do weekly online tasks in order to meet the 80% minimum attendance requirement.

These tasks are set by your lecturer and they'll outline what you're required to do.

An Attendance Register is kept by the lecturer who marks the completion of online tasks each week.

Please keep in mind that you can miss *no more* than 2 weeks of tasks., otherwise you will fail the paper, regardless of how well you've been doing at the assessment tasks.

Course Costs

Be aware of the costs associated with being a distance student:

- Non-refundable enrolment deposit \$100
- Individual paper costs
- Postage for return of library books (Distance students book requests are sent out at no charge).
- Internet costs associated with email and access to the College's web based course management system, *Moodle*.
- Toll calls to the College for out-of-Auckland students
- Stationery and other optional materials.

Academic Processes and Complaints

If you have a complaint refer to section 8 of the GSC Student Handbook (blue cover) as this outlines the complaints procedure. You can also access this online in Moodle, on the homepage of the College's online learning website.

ACADEMIC EXPECTATIONS

How much time should be set aside?

For each paper, plan for 10 hours per week on coursework and associated study.

- There are 3 hours of lectures each week for on-campus students. Distance students should allocate 3 hours to reading lecture notes and/ or watching the lecturers' PowerPoint presentations.
- All students should expect to spend 7 hours each week on personal study including reading, assessment tasks.

How do I get hold of learning materials?

Moodle is the College's web-based learning site and each week *both* distance and on-campus students go there to read course material and do tasks set by their lecturer.

The use of the Moodle website means:

- Students do not need to buy textbooks (unless specified otherwise by their lecturer), as readings are available on Moodle as pdfs or e-books.
- Lecturers no longer need to provide handouts at lectures or send course material to distance students.

To use Moodle all you really need is access to a computer able to run a broadband internet connection, with a sound and video card.

You'll require sufficient computer skills to:

- Send and receive emails.
- Open word, pdf, PowerPoint, video files.
- Type assignments in Word.
- Reply to the lecturers' questions in either a forum or quiz format in Moodle.
- Hand in and collect your assignment online

How are courses assessed?

Papers are completed each semester.

Distance students are tested and graded just like on-campus students.

There are usually three marked assessment tasks each semester that make up your final grade – although some courses may have four.

Graded assessment tasks may be:

- Internal assessment only (e.g. essay, critical review, presentation) that are scheduled throughout the semester.
- A combination of internal assessment during the semester and an examination held in exam week at the end of the semester.

If exams are part of your assessment, it's essential that you are available to sit them on the day they're scheduled within exam week. Refer to the Academic Calendar.

What if I miss a few lectures or weekly tasks?

While there is leeway to miss a few lectures (or online tasks if you're a distance student), students who do not meet the **minimum 80% attendance requirement** will fail the paper, regardless of how well they have been doing at the assessment tasks. This is one of the requirements placed upon Good Shepherd College as a government-funded Tertiary organisation.

On-campus students are to be present for at least 29 hours of lectures i.e. absent for *no more* than 7 hours of lectures.

Distance students need to complete at least 10 (out of a total of 12) online tasks in the week their lecturer set them. i.e. miss *no more* than 2 weeks.

COURSE PLANNING AND CHANGING YOUR ENROLMENT

Course Planning Advice

You have the option of discussing your plans with an advisor who can check that your course selection meets programme requirements and enables you to gain the qualification you want.

Holy Cross seminarians contact Sr Carmel Walsh either in person at the College, or email carmel@gsc.ac.nz

All other students contact Fr Merv Duffy duffy@gsc.c.nz

Changing your enrolment

At the start of each semester you can drop, swap or edit your courses by advising the Registrar maree@gsc.ac.nz before the deadlines below expire.

If you are dropping a course you will also be asked to complete a Withdrawal Form provided by the Registrar.

The following will NOT be accepted as formal notice of changing your enrolment:

- Not paying your fees
- Ceasing to attend lectures
- Verbally advising a member of staff

Failure to notify the Registrar could result in the following that we all want to avoid:

- Receive a fail grade on your Academic Record
- Do not get grades for papers studied that you are not formally enrolled in
- Invoiced for papers you did not study

Things to consider before changing your enrolment

You are advised to seek advice from StudyLink www.studylink.govt.nz to discuss the implications that changing your enrolment may have on your entitlement to financial support. Particularly if you are dropping papers and rely on income from StudyLink that is based on you maintaining your full-time status.

If you are an international student, find out whether dropping a course has implications for your Study permit Visa. You can also contact Mons. Brendan Daly for guidance. brendan.daly@xtra.co.nz

Can I withdraw after the deadline?

As the Bachelor of Theology and Graduate Diploma awards are both NZQA and TESQA accredited these deadlines are unable to be extended.

If you are outside the deadline to withdraw without penalty, you will get a fail grade and will not receive a refund.

For these reasons, try to persevere to complete and pass the course if at all possible. Changes to your programme next semester can be made if necessary.

DEADLINES 2018

	Semester 1	Semester
Final date for change of course	23 Feb 18	20 Jul 18
Final date for withdrawal without penalty	2 Mar 18	27 Jul 18

FEES GUIDE

This is a guide to help you make a quick estimate of the fees for your programme for 2018. Tuition fees are for one paper only and papers are completed each semester.

Tuition Fees – Individual Paper Costs

NZ Citizen/ Resident Fee: NZ **\$703.00**

International Student Fee*: NZ **\$715.00**

Enrolment Fee

When you enrol a non-refundable deposit of \$100 is payable.

Non-refundable deposit: NZ**\$100.00**

Please note:

- All fees are quoted in New Zealand Dollars (\$NZ) and include New Zealand Goods and Services Tax (GST). Tuition fees are set annually by the College. Fees are subject to change.
- International students must be sponsored by a Diocese or religious institution and meet admission conditions outlined on page 5.

Course Fees Invoice

The Finance Manager, Karen Cairney will send you an invoice for course fees in the first week of the semester.

Late Enrolment Fee

If you enrolled after the closing date a Late Enrolment Fee will be added to your invoice.

Payment options

When it comes time to pay your fees, you can do so by internet banking, cheque or cash.

Please be aware that if you come into the College in-person eftpos is not available.

Email Karen Cairney, Business Manager when payment is made on karen@gsc.ac.nz.

In Person	Pay by cash or cheque. Eftpos is not available.
Cheque in the Mail	Make out the cheque to Good Shepherd College
Internet Banking	Good Shepherd College Account 02-0200-0299983-000

Enrolment Deadlines

2018	Semester 1	Semester 2
Enrolments open	18 Sep 17	23 Apr 18
Enrolments close	24 Nov 17	25 May 18
New students advised if application successful	1 Dec 17	1 Jun 18
Final date for change of course	23 Feb 18	20 Jul 18
College posts fees invoice to students	26 Feb 18	24 Jul 18
Final date for withdrawal without penalty	2 Mar 18	27 Jul 18
Final date for payment	2 Mar 18	27 Jul 18

ACADEMIC CALENDAR – SEMESTER ONE 2018

The year is split into two semesters with papers completed each semester.

KEY DATES

Jan 30

College opens

Feb 16

Orientation morning

Feb 19

Lectures commence

Feb 23

Inaugural Mass

Feb 23

Final date for change of course

Mar 02

Final date for payment of fees

Mar 02

Final date for withdrawal without penalty

Mar 26 – Apr 13

Mid-semester break

Apr 23

Enrolments open for Semester Two

May 4

Patronal Feast-day Mass

May 14 - 18

Assignment week

Jun 8

Graduation Day

Jun 11

Lectures end for Semester One

Jun 12– 22

Study and examinations

Jun 25 – Jul 15

Inter-semester Break

	Mon	Tue	Wed	Thu	Fri
	22 Jan	23 Jan	24 Jan	25 Jan	26 Jan
GSC opens	29 Jan	30 Jan	31 Jan	1 Feb	2 Feb
	5 Feb	6 Feb	7 Feb	8 Feb	9 Feb
	12 Feb	13 Feb	14 Feb	15 Feb	16 Feb
Semester 1					
Week 1	19 Feb	20 Feb	21 Feb	22 Feb	23 Feb
Week 2	26 Feb	27 Feb	28 Mar	1 Mar	2 Mar
Week 3	5 Mar	6 Mar	7 Mar	8 Mar	9 Mar
Week 4	12 Mar	13 Mar	14 Mar	15 Mar	16 Mar
Week 5	19 Mar	20 Mar	21 Mar	22 Mar	23 Mar
Holy Week	26 Mar	27 Mar	28 Mar	29 Mar	30 Mar
Mid-Sem 1	2 Apr	3 Apr	4 Apr	5 Apr	6 Apr
Mid-Sem 2	9 Apr	10 Apr	11 Apr	12 Apr	13 Apr
Week 6	16 Apr	17 Apr	18 Apr	19 Apr	20 Apr
Week 7	23 Apr	24 Apr	25 Apr	26 Apr	27 Apr
Week 8	30 Apr	1 May	2 May	3 May	4 May
Week 9	7 May	8 May	9 May	10 May	11 May
Assg Wk	14 May	15 May	16 May	17 May	18 May
Week 10	21 May	22 May	23 May	24 May	25 May
Week 11	28 May	29 May	30 May	31 May	1 Jun
Week 12	4 Jun	5 Jun	6 Jun	7 Jun	8 Jun
Study &	11 Jun	12 Jun	13 Jun	14 Jun	15 Jun
Exams	18 Jun	19 Jun	20 Jun	21 Jun	22 Jun
Inter	25 Jun	26 Jun	27 Jun	28 Jun	29 Jun
Semester	2 Jul	3 Jul	4 Jul	5 Jul	6 Jul
Break	9 Jul	10 Jul	11 Jul	12 Jul	13 Jul

PUBLIC HOLIDAYS

Jan 29 Auckland Anniversary

Feb 06 Waitangi Day

Apr 01

Apr 25

Jun 04

Easter Sunday

Anzac Day

Queens Birthday

ACADEMIC CALENDAR – SEMESTER TWO 2018

Students can start mid-year in the second semester as papers are completed each semester.

KEY DATES

Jul 16

Lectures commence for Semester Two

Jul 20

Final date for change of course

Jul 27

Final date for payment of fees

Jul 27

Final date for withdrawal without penalty

Aug 27 – Sep 07

Mid-semester break

Sep 17

Enrolments open for 2019 Semester 1

Oct 01 - 05

Assignment week

Oct 22

Labour Day

Oct 26

End of year Mass

Oct 29

Lectures end for Semester Two 2018

Oct 30 – Nov 09

Study and examinations

Nov 09

End of Semester II

Nov 23

Enrolments close for 2019 Semester 1

Dec 07

College closes for 2018

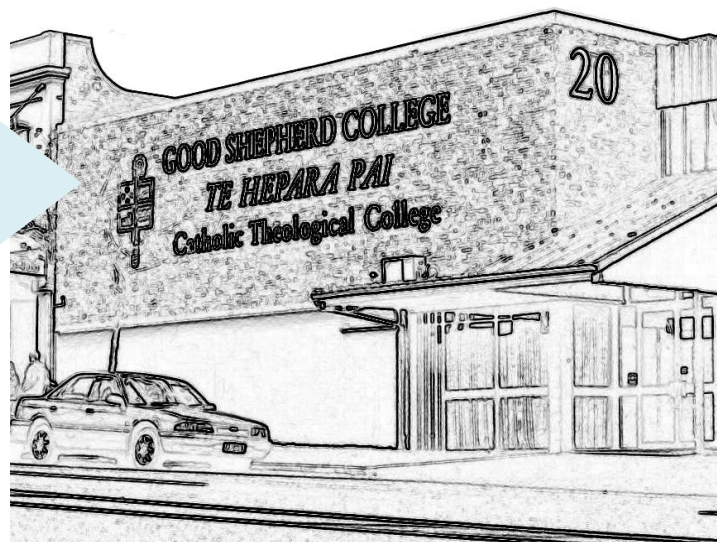
	Mon	Tue	Wed	Thu	Fri
Week 1	16 Jul	17 Jul	18 Jul	19 Jul	20 Jul
Week 2	23 Jul	24 Jul	25 Jul	26 Jul	27 Jul
Week 3	30 Jul	31 Jul	1 Aug	2 Aug	3 Aug
Week 4	6 Aug	7 Aug	8 Aug	9 Aug	10 Aug
Week 5	13 Aug	14 Aug	15 Aug	16 Aug	17 Aug
Week 6	20 Aug	21 Aug	22 Aug	23 Aug	24 Aug
Mid-Sem 1	27 Aug	28 Aug	29 Aug	30 Aug	31 Aug
Mid-Sem 2	3 Sep	4 Sep	5 Sep	6 Sep	7 Sep
Week 7	10 Sep	11 Sep	12 Sep	13 Sep	14 Sep
Week 8	17 Sep	18 Sep	19 Sep	20 Sep	21 Sep
Week 9	24 Sep	25 Sep	26 Sep	27 Sep	28 Sep
Assg Wk	1 Oct	2 Oct	3 Oct	4 Oct	5 Oct
Week 10	8 Oct	9 Oct	10 Oct	11 Oct	12 Oct
Week 11	15 Oct	16 Oct	17 Oct	18 Oct	19 Oct
Week 12	22 Oct	23 Oct	24 Oct	25 Oct	26 Oct
Study &	29 Oct	30 Oct	31 Oct	1 Nov	2 Nov
Exams	5 Nov	6 Nov	7 Nov	8 Nov	9 Nov
	12 Nov	13 Nov	14 Nov	15 Nov	16 Nov
	19 Nov	20 Nov	21 Nov	22 Nov	23 Nov
	26 Nov	27 Nov	28 Nov	29 Nov	30 Nov
	3 Dec	4 Dec	5 Dec	6 Dec	7 Dec

OPENING HOURS

GOOD SHEPHERD COLLEGE
20 PONSONBY ROAD, AUCKLAND 1011
PO BOX 3440, AUCKLAND 1140

DURING SEMESTER: MON-FRI, 8.30AM - 4.30PM
OVER BREAKS: MON-FRI, 10.00AM - 4.00PM

TEL (09) 361 1053
EMAIL admin@gsc.ac.nz
WEBSITE www.gsc.ac.nz



RETURNING STUDENTS

Required to enrol online www.gsc.ac.nz/moodle2/

Enrolment Queries

Maree Crighton
Registrar
maree@gsc.ac.nz

Good Shepherd
College Website
www.gsc.ac.nz

Course Planning

Sr. Carmel Walsh
Holy Cross Seminarians
walshca@xtra.co.nz

Fr. Merv Duffy
All other students
duffy@gsc.ac.nz

NEW STUDENTS

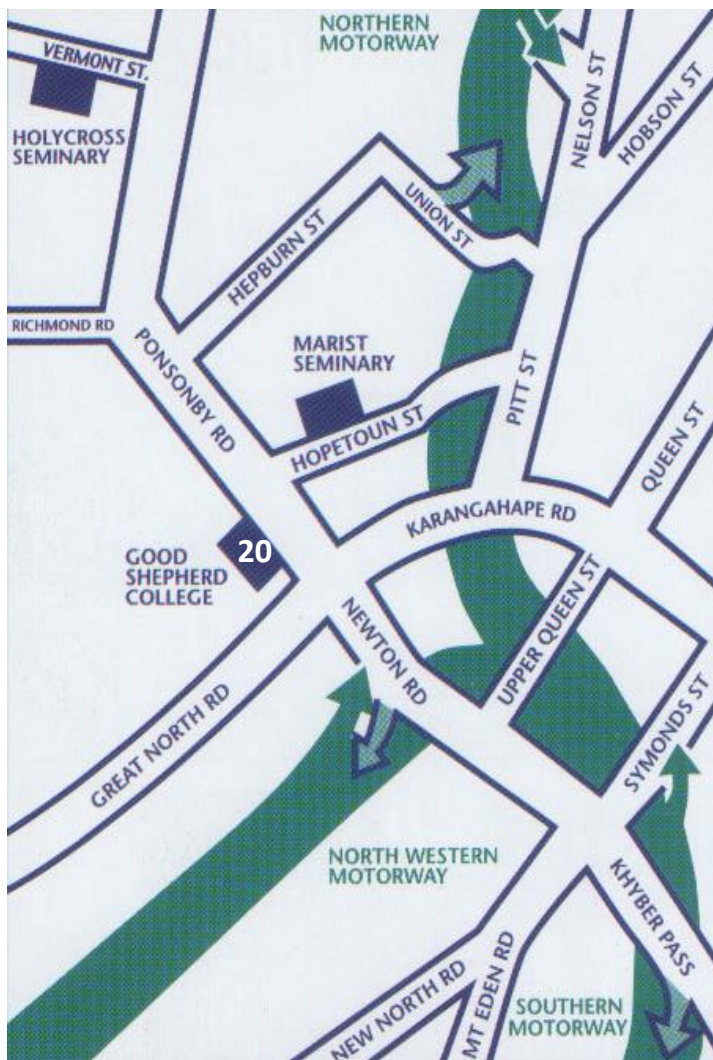
Required to fill in enrolment forms www.gsc.ac.nz

New Student Admission Enquiries

Merv Duffy, *Acting Principal*
Tel 09 361 1053 ext. 702 Email duffy@gsc.ac.nz

Request for Enrolment Forms/ Information

Maree Crighton, *Registrar*
Tel 361 1053 ext. 701 Email maree@gsc.ac.nz



FEES GUIDE – 2018

ENROLMENT FEE DEPOSIT

Non-refundable deposit: NZ\$100.00

If you enrolled after the closing date a **Late Enrolment Fee** will be added to your invoice.

INDIVIDUAL PAPER COSTS

NZ Citizen/ Resident Fee: NZ \$703.00

International Student Fee*: NZ \$715.00

International students must be sponsored by a Diocese or religious institution and meet admission conditions.

EASY WAYS TO PAY

Email Karen Cairney, Business Manager when payment is made on karen@gsc.ac.nz.

In Person	Pay by cash or cheque. Eftpos is not available.
Cheque in the Mail	Make out the cheque to Good Shepherd College
Internet Banking	Good Shepherd College Account 02-0200-0299983-000