



Enrolment Guide 2020



Semester One 2020

EDITED 1/10/19

WELCOME

You might have heard that Good Shepherd College and The Catholic Institute will become a single tertiary organisation from 1 January 2020.

It is very important to understand that what you sign up for will not be changing.

The creation of the new Catholic tertiary education provider will not affect the courses you are to enrol in, the qualification you are working towards or your overall learning experience.

Over time, the change will lead to a better resourced and more capable single organisation, which reflects a renewed commitment by the New Zealand Bishops to a strong, adaptable and contemporary Catholic tertiary organisation in Aotearoa New Zealand.

Should you have any queries relating to this, or anything else to do with your studies, please do not hesitate to contact us.

Thank you for making the commitment to study with us.

With best wishes,



Mr Gerald Scanlan
Director, The Catholic Institute
g.scanlan@tci.ac.nz



Rev Dr Merv Duffy
Acting Principal, Good Shepherd College
duffy@gsc.ac.nz

ENROLMENT DEADLINES 2020

	Semester 1	Semester 2
Enrolments open	16 Sep 19	28 Apr 20
Enrolments close	22 Nov 19	22 May 20
New students advised if application successful	4 Dec 19	5 Jun 20
Final date for change of course	21 Feb 20	17 Jul 20
College posts invoices	21 Feb 20	17 Jul 20
Final date for withdrawal without penalty	28 Feb 20	24 Jul 20
Final date for payment	28 Feb 20	24 Jul 20



CONTENTS

Welcome	1
Enrolment Deadlines	1
How to Apply	2
Fees Free Study	4
 What are my study options?	 4
Graduate Diploma of Theology	5
- Recognition of Prior Learning	5
- Diploma Planning Chart	6
Bachelor of Theology Degree	7
- Degree Planning Chart	8
- Recognition of Prior Learning	9
- Degree Study Pathway	9
 What are the admission requirements?	 11
 What are my paper options in 2020?	 12
Biblical Studies	13
Christian Ethics	14
Humanities	14
Church History	15
Liturgical Studies	16
Pastoral Theology	17
Theology	17
Philosophy	18
 Weekly Course Timetable: Semester One	 20
Weekly Course Timetable: Semester Two	21
 Useful Information	
Full List of Papers Taught at the College	22
Fees	25
International Students	25
Distance Students	26
Academic Expectations	27
Course Planning and Changing Enrolment	28
Refunds and Withdrawals	28
Academic Calendar	29
Staff Contact List	30

HOW TO APPLY

New students are required to discuss their study plans with the Dean before submitting application forms. Email dean@gsc.ac.nz

Returning students enrol online in Moodle without the need to contact the Dean. Go to <http://www.gsc.ac.nz/moodle2/>

NEW STUDENTS

1. Consider study options

- Choose your programme of study (*outlined on the next few pages*)
- Determine whether you meet the admission requirements (*page 11*)
- Select papers of interest (*page 12*)

2. Contact the Dean of Studies

Once you have decided upon a programme of study you are required to confer with the Dean of Studies, dean@gsc.ac.nz

You may be asked to attend an interview or to discuss your plans by email or phone.

The Dean needs to make sure you can achieve the academic standards of the qualification. Factors considered include your academic history, previous experience and other relevant information.

Candidates are required to make contact with the Dean before submitting their application.

3A. Complete the Application Forms

Ensure you provide correct and complete information as it is the basis upon which your application will be assessed.

You must complete and return all five forms. The good news is that this only has to be done *once* because in subsequent semesters there is a simple one-page online enrolment.

3B. Include documents with Application Form

It is important that you send supporting documents with your application forms to prove you meet admission requirements.

Proof of identity: Provide either a passport or birth certificate. If the name on your application doesn't match the name on your birth certificate or passport you must also provide a marriage certificate or deed poll.

Evidence of citizenship or residency

If you are not born in NZ and you do not have a NZ passport you must provide other evidence of residency e.g. Student Visa or Work Visa.

Passport sized photograph

Post, email or take photos at the College.

Previous Academic Study

If applying to study towards the Graduate Diploma you must provide a certificate as evidence that you've attained a degree level qualification. This is proof that you meet admission requirements. If seeking credit for previous study an academic transcript is required.

Have your documents been certified?

We only accept documents that have been certified as true copies of the original. You can either take the original document to a Justice of the Peace to have the originals witnessed *or* bring the originals to Good Shepherd College where we can certify them for you.

4. Pay the \$100 Enrolment Deposit

A non-refundable deposit of \$100 is payable when you submit your application. If you enrolled after the closing date a **Late Enrolment Fee** is added to your invoice.

In Person	Pay by cash or cheque. Eftpos is not available.
Cheque in the post	Make out the cheque to Good Shepherd College
Internet Banking	Good Shepherd College Account 02-0200-0299983-000

5. Outcome of your application.

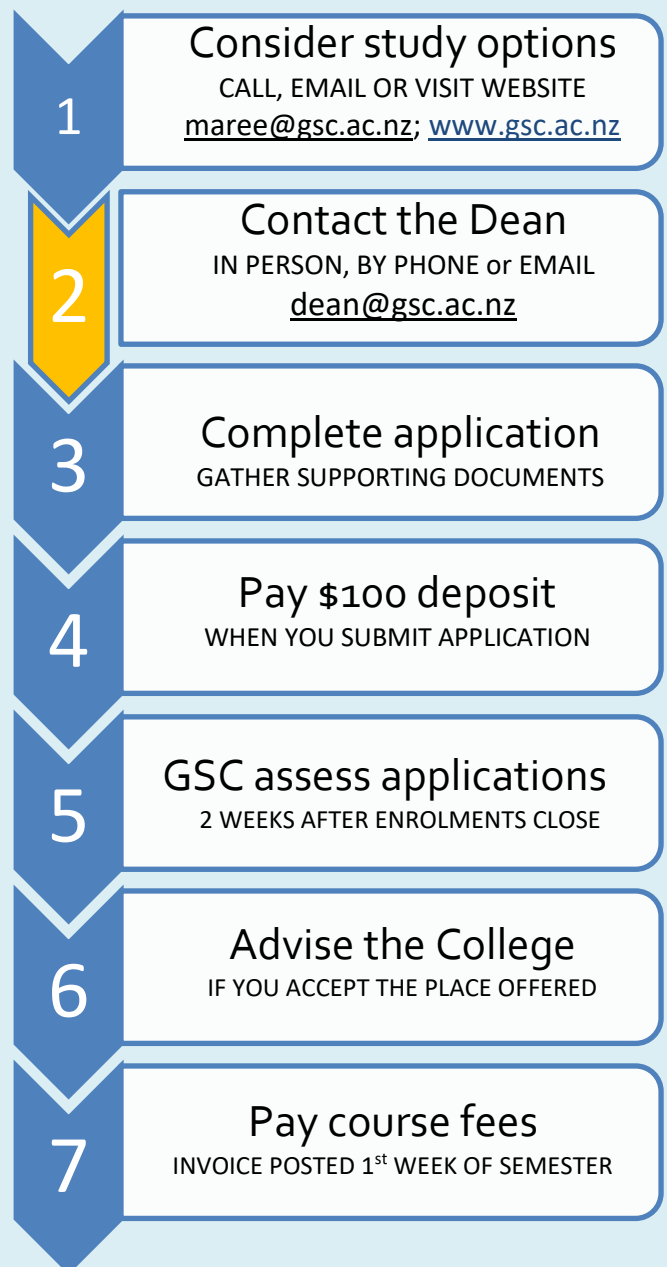
A week after the date that enrolments close we'll let you know if your application has been successful.

6. Advise registrar@gsc.ac.nz if you accept the place offered.

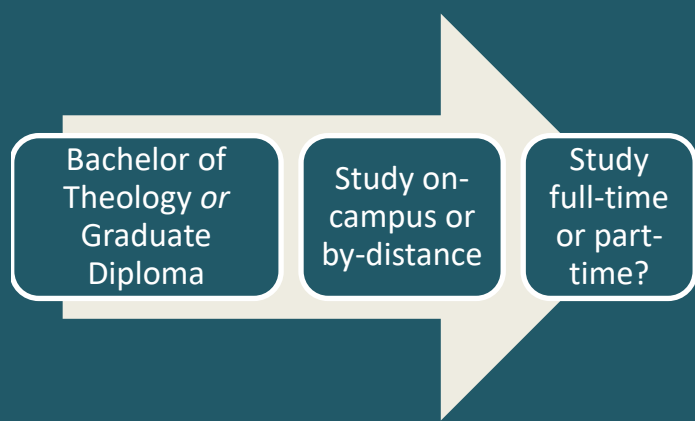
7. Pay course fees

In the first week of the semester the College posts invoices outlining total fees to be paid (including a Late Enrolment Fee if you enrolled after the closing date).

APPLICATION PROCESS FOR NEW STUDENTS



WHAT ARE MY STUDY OPTIONS?



Good Shepherd College offers two awards.

1. Graduate Diploma in Theology (*GradDip*)
2. Bachelor of Theology (*BTh*)

You must be admitted to a programme to take papers. If you want to complete individual papers and are not interested in working towards a full qualification, this is not an option at Good Shepherd College.

PAPER OPTIONS

The same selection of papers (*outlined on page 12*) are available for both the Bachelor of Theology and the Graduate Diploma, for both full-time and part-time students.

Special Note

- Pay attention to the mode of study the paper is being taught by. For example, is the paper of interest being taught on-campus only, by-distance only or in both modes?
- Papers are completed each semester, with two semesters a year.
- If you want to complete individual papers but not a full qualification, this is not an option at Good Shepherd College.

How many papers am I able to take?

To ensure your paper selection represents a reasonable workload there are limits to the number of papers students can take each semester. Refer to the table below.

TABLE 1: MODE OF STUDY

	On-campus	Distance
<i>Part-time</i>	1, 2 or 3 papers per semester	1 or 2 papers per semester
<i>Full-time</i>	4 papers per semester	Not available

FEES FREE STUDY

Check to see if you're eligible

The government has announced details of its policy of fees-free study for students new to tertiary education. They've set up a website to help you find out if you are eligible.

www.feesfree.govt.nz

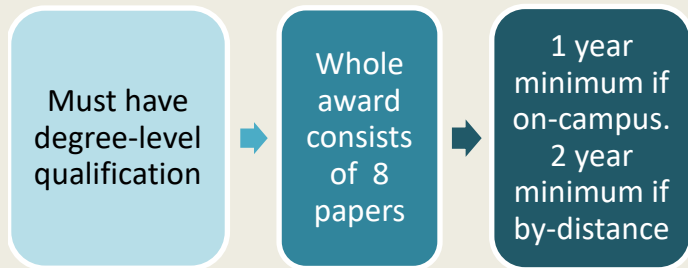
Make sure you have your National Student Number (NSN) handy. If you don't have your NSN the website will tell you what you need to do to get one.

What do the free fees cover?

The government will pay up to \$12,000 in fees to cover tuition, associated mandatory fees and compulsory student-service fees, for the equivalent of one year of full-time study (typically 120 credits). If you are studying part-time, you can spread this out over a longer period. If your fees are more than \$12,000, you will need to pay the difference.

Answers to [frequently asked questions](#) can be found on the Fees Free site at

1. GRADUATE DIPLOMA IN THEOLOGY



The Graduate Diploma in Theology requires the completion of eight papers that takes at least one further year of full-time study or the equivalent part-time. In NZQA speak it is a level 7 award of 120 credit points.

The Graduate Diploma is an undergraduate diploma – it is not postgraduate. It can also be added as a further qualification for those who have a Bachelor of Theology degree.

Admission Criteria and Recognition of Prior Learning

The Graduate Diploma requires you to hold a bachelor's degree as the entry requirement. Studies beyond that entry requirement may qualify for recognition of prior learning.

If interested, tick the 'Yes' box on your application form to the question "Would you like to apply for credit for previous study?" Or contact dean@gsc.c.nz to discuss.

Provide the details and certified copies of transcripts and check the 'Yes' box after the question "Would you like to apply for credit for previous study?"

This information is considered by the Board of Studies, and they may grant credit for up to two papers. This process is only done for students who are enrolled in the Graduate Diploma in Theology.

Structure of the Graduate Diploma

The Graduate Diploma of Theology is deliberately a very flexible award that requires the completion of eight papers, five of which must be at stage 3.

The Diploma recognises that previous tertiary study enables students to begin with higher level papers without the need for prerequisites i.e. you can select a stage 3 paper without the need to complete the lower (stage 1 or 2) papers.

Any combination of papers can be selected provided you include the compulsory paper T7101, Introduction to Theology (or equivalent). While there is no recommended programme the College encourages some Biblical Studies papers. Read more about the structure of the diploma on the next page.

Good Shepherd College is open to all students who wish to study theology (and its related disciplines) in the Roman Catholic Tradition. The College offers two awards, the Bachelor of Theology Degree and the Graduate Diploma in Theology that are both accredited by the New Zealand Qualifications Authority (NZQA) and the Australian Commonwealth Higher Education Authority (TEQSA).

The same selection of papers are available in both programmes of study. Papers are taught in the following disciplines; namely Biblical Studies, Christian Ethics, Church History, Humanities, Liturgical Studies, Pastoral Theology and Practice, Philosophy, Christian Spirituality and Theology.

GRADUATE DIPLOMA OF THEOLOGY PLANNING CHART

Discipline	CODE	COURSE UNIT TITLE
THEOLOGY	T7101	INTRODUCTION TO THEOLOGY
	T7217	THE CHURCH
	T7231	THE PERSON AND WORK OF CHRIST
	T7324	BAPTISM AND CONFIRMATION
	T7325	ANointing AND RECONCILIATION
	T7326	THE EUCHARIST
	T7327	THE SACRAMENT OF MARRIAGE
	T7328	THEOLOGY OF PRIESTHOOD
	T7333	THE TRINITY
	T7337	CHRISTIAN ANTHROPOLOGY AND GRACE
HUMANITIES IN THE CHRISTIAN TRADITION	H7110	HISTORY OF THE EARLY CHURCH
	H7240	HISTORY OF THE CHURCH IN THE MIDDLE AGES
	H7350	THE REFORMERS AND THE REFORMATION
	H7383	NEW ZEALAND CATHOLICS: THEIR STORY
	W7106	ANCIENT AND EARLY MEDIEVAL PHILOSOPHY
	W7109	MEDIEVAL & EARLY MODERN PHILOSOPHY
	W7207	LOGIC AND CRITICAL THINKING
	W7222	MORAL PHILOSOPHY
	W7309	FROM DESCARTES TO KANT
	W7310	FROM KANT TO POSTMODERNISM
	W7331	METAPHYSICS
	W7332	THE HUMAN PERSON
CHRISTIAN LIFE AND MINISTRY	S7102	INTRODUCTION TO CHRISTIAN SPIRITUALITY
	S7260	PRAYER AND PRAYERFULNESS
	S7350	CHRISTIAN SPIRITUAL WISDOM
	L7100	INTRODUCTION TO CHRISTIAN WORSHIP
	L7200	LITURGICAL RITES
	L7220	INTRODUCTION TO PREACHING
	C7249	HUMAN DEVELOPMENT & PASTORAL COUNSELLING
	P7101	INTRODUCTION TO PASTORAL THEOLOGY & MINISTRY
	P7235	MAORI PASTORAL CARE
	P7282	SUPERVISED MINISTRY 1
	P7362	CANON LAW AND THE SACRAMENTS
	P7363	SELECTED THEMES IN CANON LAW
	P7376	THE PSYCHOLOGY OF RELIGIOUS VOCATION
	E7100	SOURCES AND PRINCIPLES OF CHRISTIAN ETHICS
	E7200	METHODS IN CHRISTIAN ETHICS
	E7345	JUSTICE, HUMAN LIFE AND SOCIETY
	E7346	MARRIAGE, FAMILY AND SEXUAL ETHICS
	E7350	CHRISTIAN ANTHROPOLOGY AND BIOETHICS
BIBLICAL STUDIES	B7110	INTRODUCTION TO BIBLICAL STUDIES
	B7214	PENTATEUCH
	B7229	WISDOM LITERATURE
	B7231	PROPHETIC LITERATURE
	B7254	SYNOPTIC GOSPELS
	B7326	PSALMS
	B7364	PAULINE LITERATURE
	B7368	JOHANNINE LITERATURE
	A7132	ECCLESIASTICAL LATIN

RULES

- ☐ A DEGREE AS THE ENTRY REQUIREMENT
- ☐ CONSISTS OF EIGHT PAPERS

Compulsory Paper

1 T7101 *or equivalent*

- ☐ TWO OTHER PAPERS CAN BE AT ANY LEVEL

Foundational Papers

2

3

HIGHER LEVEL PAPERS ARE MORE SPECIALIZED

- ☐ FIVE COURSE UNITS X73XX
GRADUATE DIPLOMA MUST HAVE
FIVE PAPERS FROM STAGE THREE

Advanced Papers

4

5

6

7

8

There is no recommended programme. Any combination of papers can be chosen provided you include T7101 and five stage 3 papers. You can begin at higher level papers without the need for pre-requisites.

The College encourages students to include some Biblical Studies papers.

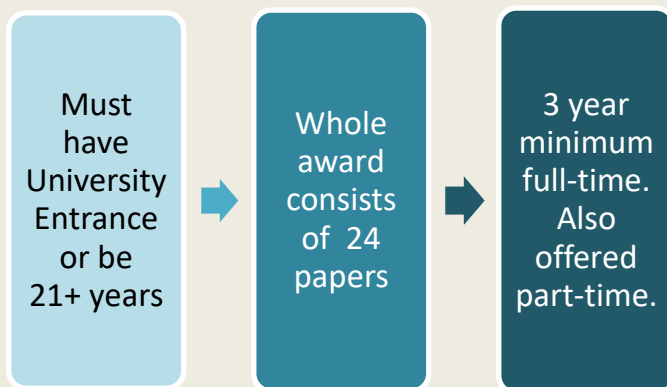
STRUCTURE OF THE BACHELOR OF THEOLOGY DEGREE

It's important to understand the structure of your programme of study to ensure you choose papers that meet programme requirements and your study interests. This also avoids finding out later that the papers you completed cannot be counted towards your degree.

The Planning Chart on the next page shows you what the rules are for the Bachelor of Theology degree.

Be sure to take a close look at the subject area (e.g. Theology) from which you select your papers and the study level of each paper.

2. BACHELOR OF THEOLOGY



A Bachelor's degree takes a minimum of three years to complete. In NZQA speak it is a level 7 award of 360 credit points or 24 papers.

A full-time student does 120 credits in a year. That is four papers each semester. All of our papers are the same size, 15 credit points. 4 papers x 15 credits = 60 credits in a semester. There are two semesters in a year 60+60=120 credit points.

Part-time or distance students will take longer to complete the degree. Refer to the mode of study table on the previous page for more details.

Admission Requirements

Available to candidates who have attained university entrance or are 21 years or over.

Paper selection

Care must be taken to select papers that satisfy the strict requirements outlined in the planning chart on the next page.

The Bachelor of Theology is a structured degree that consists of 24 papers.

As part of your degree you will need to complete two majors and one sub-major.

It is important to understand the components that make up the structure of the degree and how they fit together when you plan your studies, particularly when selecting your Second-Major.

The regulations require students to:

1. Take Theology as a Compulsory First-Major

- Complete 6 papers to achieve the major.
- Complete not more than two stage 1 papers e.g. T71XX. At least one stage 3 paper e.g. T73XX

2. Choose a Second-Major

- Choice of either Humanities in the Christian Tradition (*Option A*) or Christian Life and Ministry (*B*).
- 6 papers are required to complete the Second-Major you choose.
- Refer to the numbered points on the chart over page for regulations on paper selection to achieve the second major.

3. Take Biblical Studies as a Compulsory Sub-Major

- 4 papers must be completed at the study level specified on the next page.

BACHELOR OF THEOLOGY PLANNING CHART

Discipline	CODE	COURSE UNIT TITLE
THEOLOGY	T7101	INTRODUCTION TO THEOLOGY
	T7217	THE CHURCH
	T7231	THE PERSON AND WORK OF CHRIST
	T7324	BAPTISM AND CONFIRMATION
	T7325	ANOIDING AND RECONCILIATION
	T7326	THE EUCHARIST
	T7327	THE SACRAMENT OF MARRIAGE
	T7328	THEOLOGY OF PRIESTHOOD
	T7333	THE TRINITY
T7337	CHRISTIAN ANTHROPOLOGY AND GRACE	
HUMANITIES IN THE CHRISTIAN TRADITION	H7110	HISTORY OF THE EARLY CHURCH
	H7240	HISTORY OF THE CHURCH IN THE MIDDLE AGES
	H7350	THE REFORMERS AND THE REFORMATION
	H7383	NEW ZEALAND CATHOLICS: THEIR STORY
	W7106	ANCIENT AND EARLY MEDIEVAL PHILOSOPHY
	W7109	MEDIEVAL & EARLY MODERN PHILOSOPHY
	W7207	LOGIC AND CRITICAL THINKING
	W7222	MORAL PHILOSOPHY
	W7309	FROM DESCARTES TO KANT
	W7310	FROM KANT TO POSTMODERNISM
	W7331	METAPHYSICS
	W7332	THE HUMAN PERSON
CHOOSE EITHER OPTION A OR B		
CHRISTIAN LIFE AND MINISTRY	S7102	INTRODUCTION TO CHRISTIAN SPIRITUALITY
	S7260	PRAYER AND PRAYERFULNESS
	S7350	CHRISTIAN SPIRITUAL WISDOM
	L7100	INTRODUCTION TO CHRISTIAN WORSHIP
	L7200	LITURGICAL RITES
	L7220	INTRODUCTION TO PREACHING
	C7249	HUMAN DEVELOPMENT & PASTORAL COUNSELLING
	P7101	INTRODUCTION TO PASTORAL THEOLOGY & MINISTRY
	P7235	MAORI PASTORAL CARE
	P7282	SUPERVISED MINISTRY 1
	P7362	CANON LAW AND THE SACRAMENTS
	P7363	SELECTED THEMES IN CANON LAW
	P7376	THE PSYCHOLOGY OF RELIGIOUS VOCATION
	E7100	SOURCES AND PRINCIPLES OF CHRISTIAN ETHICS
	E7200	METHODS IN CHRISTIAN ETHICS
	E7345	JUSTICE, HUMAN LIFE AND SOCIETY
	E7346	MARRIAGE, FAMILY AND SEXUAL ETHICS
	E7350	CHRISTIAN ANTHROPOLOGY & BIOMEDICAL ETHICS
BIBLICAL STUDIES	B7110	INTRODUCTION TO BIBLICAL STUDIES
	B7214	PENTATEUCH
	B7229	WISDOM LITERATURE
	B7231	PROPHETIC LITERATURE
	B7254	SYNOPTIC GOSPELS
	B7326	PSALMS
	B7364	PAULINE LITERATURE
	B7368	JOHANNINE LITERATURE
A7132	ECCLESIASTICAL LATIN	

RULES							
FIRST MAJOR	1. <input type="checkbox"/> TWO MAJORS 2. <input checked="" type="checkbox"/> COMPULSORY FIRST						
<table border="1"> <tr><td>1 T7101</td></tr> <tr><td>2 T7217</td></tr> <tr><td>3 T7231</td></tr> <tr><td>4</td></tr> <tr><td>5</td></tr> <tr><td>6</td></tr> </table>	1 T7101	2 T7217	3 T7231	4	5	6	MAJOR IN THEOLOGY 3. <input type="checkbox"/> 24 COURSE UNITS IN THIS MAJOR: 4. <input type="checkbox"/> NOT MORE THAN TWO T71XX 5. <input type="checkbox"/> AT LEAST ONE T73XX
1 T7101							
2 T7217							
3 T7231							
4							
5							
6							
SECOND MAJOR OPTION A <table border="1"> <tr><td>1</td></tr> <tr><td>2</td></tr> <tr><td>3</td></tr> <tr><td>4</td></tr> <tr><td>5</td></tr> <tr><td>6</td></tr> </table>	1	2	3	4	5	6	6. <input type="checkbox"/> COMPULSORY SECOND MAJOR. 7. <input type="checkbox"/> CHURCH HISTORY COURSE UNIT MUST BE INCLUDED 8. <input type="checkbox"/> NOT MORE THAN ONE 71XX IN THE MAJOR 9. <input type="checkbox"/> AT LEAST ONE 73XX
1							
2							
3							
4							
5							
6							
SECOND MAJOR OPTION B <table border="1"> <tr><td>1</td></tr> <tr><td>2</td></tr> <tr><td>3</td></tr> <tr><td>4</td></tr> <tr><td>5</td></tr> <tr><td>6</td></tr> </table>	1	2	3	4	5	6	10. <input type="checkbox"/> FOUR COURSE UNITS FROM CHRISTIAN LIFE & MINISTRY MUST BE INCLUDED. (IRRESPECTIVE OF CHOSEN MAJORS) 11. <input type="checkbox"/> MAJOR B REQUIRES 3 COURSE UNITS TO BE FROM THE SAME SUB-DISCIPLINE. <i>i.e. - 3 codes to start WITH THE SAME LETTER</i>
1							
2							
3							
4							
5							
6							
12. COMPULSORY BIBLICAL STUDIES SUB-MAJOR <table border="1"> <tr><td>1 B7110</td></tr> <tr><td>2 B7214</td></tr> <tr><td>3 B7254</td></tr> <tr><td>4</td></tr> </table>		1 B7110	2 B7214	3 B7254	4		
1 B7110							
2 B7214							
3 B7254							
4							
The sub-major needs: 13. <input type="checkbox"/> NOT MORE THAN TWO B71XX 14. <input type="checkbox"/> AT LEAST ONE B72XX							

BTH STUDY PATHWAYS

Bachelor of Theology (BTh)

A Bachelor of Theology degree requires you to have certain subjects in it.

1. Theology (also called Systematic Theology) is a bit like advanced Religious Studies. You have to do six theology papers to complete your compulsory First-Major. Shown below is a study pathway for Theology.
2. You also need to know about Scripture. So you have to do four Biblical Studies papers to complete your compulsory Sub-Major. The study pathway for Biblical studies is shown on the next page.
3. There are a bunch of other subjects from which you choose your Second-Major and this enables you to tailor study to your interests. Refer to the planning chart.

For possible pathways for your Second-Major go to <http://www.gsc.ac.nz/course-papers/>

Recognition of Prior Learning for BTh

Can I get recognition for previous academic study?

Yes, on your enrolment form you will be asked if you have done previous tertiary studies. Provide the details and certified copies of transcripts and check the 'Yes' box after the question "Would you like to apply for credit for previous study?"

This information is sent to the Catholic Institute of Sydney who present it to the Student Support and Administration Committee for a decision. This process can take some months.

BTh Study Pathway – Compulsory First Major in Theology

Stage One

T7101	Introduction to Theology
-------	--------------------------

Pre-requisite Stage Two

T7101	T7217	The Church
T7101	T7231	The Person and Work of Christ

Pre-requisite Stage Three

3 Theology papers	T7324	Baptism and Confirmation
3 Theology papers	T7325	Anointing and Reconciliation
Any Stage 2 Theology	T7326	The Eucharist
Any Stage 2 Theology	T7327	Marriage
Any Stage 2 Theology	T7328	Theology of Priesthood
Any Stage 1 Theology	T7333	The Trinity
Any Stage 2 Theology	T7337	Christian Anthropology and Grace

T7101

Both stage 2
Theology papers

Any Theology
paper

SELECTING PAPERS

This section assists you in selecting the right papers that meet the requirements of the degree or diploma you're studying towards.

Entry-level papers

In the study pathways you'll notice that the "entry-level" papers are at stage 1. They assume no prior knowledge (well they assume that you have been through secondary school and have University Entrance or its equivalent). There is usually one stage 1 paper in each subject area, often with a title like "Introduction to ..."

Bachelor of Theology Degree

The Bachelor's degree has pre-requisites for papers above stage one .i.e. papers that must be completed before further study in the subject area of interest can be taken. Stage One papers are your starting point. There is usually one stage one paper in each subject area. The stage 2 papers expect you to have done the stage 1 in that subject area.

Graduate Diploma in Theology

The diploma recognises that previous study enables the student to begin with higher-level papers without the need for pre-requisites. You can choose any combination of papers provided you include T7101 and complete five papers at stage 3.

Paper Codes

Paper codes all start with a letter that identifies the sub-discipline they belong to. For example, **B7110** is **Biblical Studies**. All our courses are at undergraduate level i.e. Level 7, the first number e.g. **B7110**. The second number represents the different study levels. **100s** – Stage I or 1st level course, **200s** – Stage II or 2nd level course, **300s** – Stage III or 3rd level course. The last two digits identify each paper

BTh Pathway– Compulsory Sub Major in Biblical Studies

Stage One

B7110	Introduction to Biblical Studies
-------	----------------------------------

Pre-requisite

Stage Two

One Biblical paper
One Biblical paper
One Biblical paper
One Biblical paper

B7214	Pentateuch
B7229	Wisdom Literature
B7231	Prophetic Literature
B7254	Synoptic Gospels

Pre-requisite

Stage Three

Two Biblical papers
Two Biblical papers
Two Biblical papers

B7214	Psalms
B7364	Pauline Literature
B7368	Johannine Literature

B7110

Any one
stage 2 Bibs

Any Bibs
paper

ADMISSION REQUIREMENTS

This section has information on the minimum admission (or entry) requirements you need.

1. You must meet **College** admission requirements
2. You must also fulfil the criteria of the specific **programme** you choose to enrol in. i.e. Bachelor of Theology or Graduate Diploma in Theology.

PROGRAMME

ADMISSION CRITERIA

	BACHELOR OF	GRADUATE DIPLOMA	
STANDARD ADMISSION	University Entrance	Degree-level Qualification	
SPECIAL ADMISSION	21 years of age or	Discuss with Dean	

INTERNATIONAL STUDENTS

Need to meet the following requirements:

- ❑ Sponsored by a Diocese or religious institution in New Zealand.
- ❑ Reside in New Zealand during your period of study.
- ❑ At least 18 years of age on the first day of the semester you begin study.
- ❑ Have completed either (1) a qualification in your home country recognised in New Zealand as the equivalent to the university entrance standard, OR (2) attended a secondary school in New Zealand and achieved the university entrance standard.
- ❑ Attained a minimum of 6.5 in IELTS (at least 6.0 in each band) as evidence of English proficiency.
- ❑ Hold a valid visa (student or work visa).
- ❑ Have medical and travel insurance *if applying with a student visa*.
- ❑ Provide proof of identity (passport or birth certificate, 2 passport-size photos).

COLLEGE

ADMISSION REQUIREMENTS

To be eligible to be admitted you must either:

1. Have attended secondary school in NZ and achieved the University Entrance standard.
2. If you have studied overseas or at another New Zealand tertiary institution, the College will consider your admission based on previous academic performance.
3. If you don't have a University Entrance qualification you can apply for and be granted special admission if you are:
 - 21 years or over on the first day of the semester in which you wish to begin study.
 - And a New Zealand Citizen or a New Zealand Permanent Resident.

Recognition of Prior Learning

You may also apply for credit for studies completed at other tertiary institutions. For more details refer to page 9 for the Bachelor's degree or page 5 for the Graduate Diploma.

International students

May wish to seek advice from their Pastoral Care Person, Rev Dr Brendan Daly brendan.daly@xtra.co.nz



PAPERS TAUGHT IN 2020

2020 Semester 1	
A7132	Ecclesiastic Latin § Sr Elizabeth Snedden RSCJ, DTheol
B7110	Introduction to Biblical Studies Dr Sarah Hart BA, DipMus, D. Theol.
B7368	Johannine Literature Rev Dr Kevin Waldie SM, BA, SSL, PhD
E7200	Methods in Christian Ethics § Rev Dr Bernard Teo, CSsR
H7110	History of the Early Church Mayte Ramos BA, Lic.His.
H7383	NZ Catholics: Their Story § Mayte Ramos BA, Lic.His.
L7100	Introduction to Christian Worship § Fr John Tollan BTheol, STL
L7220	Introduction to Preaching § Rev Dr Timothy Costello SM, ATCL, PhD
P7363	Selected Themes in Canon Law Rev Dr Brendan Daly PhD, JCD
T7333	The Trinity Rev Dr Mervyn Duffy SM, BSc, STD
W7106	Ancient and Early Medieval Philosophy § David Legg PhD
W7309	From Descartes to Kant Rev Dr John Owens SM, PhD
W7331	Metaphysics Rev Dr John Owens SM, PhD

§= on-campus only

All other courses taught both on-campus and by-distance.

2020 Semester 2	
B7214	Pentateuch Rev Dr Kevin Waldie SM, BA, SSL, PhD
E7346	Marriage, Family and Sexual Ethics § Rev Dr Bernard Teo, CSsR
L7200	Liturgical Rites § TBC
P7101	Introduction to Pastoral Theology Rev Dr Timothy Costello SM, ATCL, PhD
P7235	Maori Pastoral Care § Rev Dr Brendan Daly PhD, JCD
P7362	Canon Law and the Sacraments Rev Dr Brendan Daly PhD, JCD
P7376	The Psychology of Religious Vocation Rev Dr Timothy Costello SM, ATCL, PhD
T7101	Introduction to Theology Dr Rocio Figueroa BTh, LTh, STD
T7231	The Person and Work of Christ Rev Dr Mervyn Duffy SM, BSc, STD
W7207	Logic and Critical Thinking Rev Dr John Owens SM, PhD
W7310	From Kant to Postmodernism Rev Dr John Owens SM, PhD

§= on-campus only

All others taught both on-campus and by-distance.

Semester 1: Courses taught By-Distance

B7110 Introduction to Biblical Studies

B7368 Johannine Literature

H7110 History of the Early Church

P7363 Selected Themes in Canon Law

T7333 The Trinity

W7309 From Descartes to Kant

W7331 Metaphysics



BIBLICAL STUDIES

Title	INTRODUCTION TO BIBLICAL STUDIES
Code	B7110
Pre-requisite	None
Lecturer	Dr Sarah Hart BA, DipMus, D. Theol.
NZ Credit Value	NZQA NQF Level 5 (15 credits)

This stage one paper is your gateway into further studies of the inspired texts as it is a pre-requisite for later Biblical Studies courses.



Introduces students to the Bible, its content, context and literary genres and to the methodologies of biblical reading, study and interpretation.

BUY: New Oxford Annotated Bible with the Apocrypha: New Revised Standard Version edited by Michael Coogan. 4th Revised Edition. Oxford University Press.

Duration: 12 teaching weeks: 17 Feb – 19 Jun
(incl breaks) **Semester One 2020**

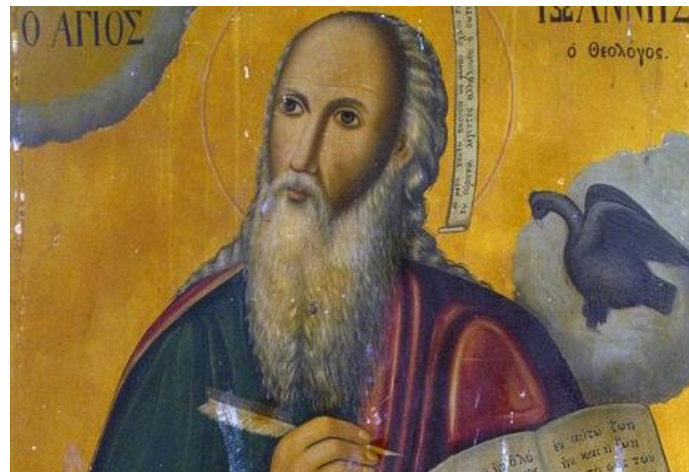
When: Monday 10am - 12noon
Thursday 2 - 3pm
A total of 3 hours per week

Mode of Study: Available to both on-campus and distance students.

Individual Paper Fees: NZ\$730.00 - NZ Citizen/ Resident
NZ\$745.00 - International Student

Title	JOHANNINE LITERATURE
Code	B7368
Pre-requisite	Two papers (30 NZQA credits) in Biblical Studies
Lecturer	Rev Dr Kevin Waldie SM, BA, SSL, PhD
NZ Credit Value	NZQA NQF Level 7 (15 credits)

John the Evangelist and Letter Writer offers us a unique insight into the faith and life of early Christianity.



This course unit builds upon the knowledge and skills learned in the pre-requisite units. It examines the historical context, literary forms and theological content of the Gospel and Letters of John, and their application to a range of spiritual and pastoral concerns.

Duration: 12 teaching weeks: 17 Feb – 19 Jun
(incl breaks) **Semester One 2020**

When: Tuesday 3pm – 4pm
Thursday 10am – 12noon
A total of 3 hours per week

Mode of Study: Available to both on-campus and distance students.

Individual Paper Fees: NZ\$730.00 - NZ Citizen/ Resident
NZ\$745.00 - International Student

CHRISTIAN ETHICS

Title	METHODS IN CHRISTIAN ETHICS
Code	E7200
Pre-requisite	E7100
Lecturer	Rev Dr Bernard Teo, CSSR
NZ Credit Value	NZQA NQF Level 6 (15 credits)



This unit introduces students to methods and principles of Christian ethical reflection and moral theology. It provides a methodological basis for specialised studies in Christian ethics.

Duration: 12 teaching weeks: 17 Feb – 19 Jun
(incl breaks) **Semester One 2020**

When: Wednesday 9am – 12noon
A total of 3 hours per week

Mode of Study: Available on-campus only.
No distance mode.

Individual Paper Fees: NZ\$730.00 - NZ Citizen/ Resident
NZ\$745.00 - International Student

HUMANITIES

Title	ECCLESIASTICAL LATIN
Code	A7132
Pre-requisite	None
Lecturer	Sr Elizabeth Snedden RSCJ, DTheol
NZ Credit Value	NZQA NQF Level 5 (15 credits)

Learning Latin is a way of getting in touch with centuries of church culture, and making her finest music more meaningful.



This course unit aims to provide the student with the basic grammatical and syntactical knowledge that will lead to a grasp of the Latin ecclesiastical writings.

Duration: 12 teaching weeks: 17 Feb – 19 Jun
(incl breaks) **Semester One 2020**

When: Monday 1pm – 2pm
Tuesday 9am – 10am
Friday 11am – 12noon

Mode of Study: Available on-campus only.
No distance mode.

Individual Paper Fees: NZ\$730.00 - NZ Citizen/ Resident
NZ\$745.00 - International Student

CHURCH HISTORY

Title HISTORY OF THE EARLY CHURCH

Code H7110

Pre-requisite None

Lecturer Mayte Ramos BA, Lic.His.

NZ Credit Value NZQA NQF Level 5 (15 credits)



This course unit is designed to provide students with an overview and general understanding of the early centuries of Christian history.

Duration: 12 teaching weeks: 17 Feb – 19 Jun
(incl breaks) **Semester One 2020**

When: Tuesday 2pm – 3pm
Wednesday 1 - 3pm
A total of 3 hours per week

Mode of Study: Available to both on-campus and distance students.

Individual Paper Fees: NZ\$730.00 - NZ Citizen/ Resident
NZ\$745.00 - International Student

Title NZ CATHOLICS: THEIR STORY

Code H7383

Pre-requisite Two papers (30 NZQA credits) in Church History.

Lecturer Mayte Ramos BA, Lic.His.

NZ Credit Value NZQA NQF Level 7 (15 credits)



This course unit is designed to provide students with an overview and general understanding of the early centuries of Christian history.

Duration: 12 teaching weeks: 17 Feb – 19 Jun
(incl breaks) **Semester One 2020**

When: Monday 10am – 12noon
Thursday 2 - 3pm
A total of 3 hours per week

Mode of Study: Available on-campus only.
No distance mode.

Individual Paper Fees: NZ\$730.00 - NZ Citizen/ Resident
NZ\$745.00 - International Student

LITURGICAL STUDIES

Title **INTRODUCTION TO CHRISTIAN WORSHIP**

Code L7100

Pre-requisite None

Lecturer TBC

NZ Credit Value NZQA NQF Level 5 (15 credits)

Look at what Liturgy – public worship – is, how it has developed across Christian history and study its underlying principles.



This course unit introduces students to concepts that provide a foundation for the study of Christian worship.

Duration: 12 teaching weeks: 17 Feb – 19 Jun
(incl breaks) **Semester One 2020**

When: Tuesday 10am – 12noon
Tuesday 1pm – 2pm
A total of 3 hours per week

Mode of Study: Available on-campus only.
No distance mode.

Individual Paper Fees: NZ\$730.00 - NZ Citizen/ Resident
NZ\$745.00 - International Student

Title **INTRODUCTION TO PREACHING**

Code L7220

Pre-requisite None

Lecturer Rev Dr Timothy Costello SM, ATCL, PhD

NZ Credit Value NZQA NQF Level 6 (15 credits)

The theory and practice of public speaking in ministry.



This course unit seeks to establish a theology of preaching that provides an adequate theoretical foundation to preaching practice and introduces students to the foundational skills needed for the preparation and delivery of homilies or sermons.

Duration: 12 teaching weeks: 17 Feb – 19 Jun
(incl breaks) **Semester One 2020**

When: Monday 9am – 10am
Wednesday 9am – 11am
A total of 3 hours per week

Mode of Study: Available on-campus only.
No distance mode.

Individual Paper Fees: NZ\$730.00 - NZ Citizen/ Resident
NZ\$745.00 - International Student

PASTORAL THEOLOGY

Title	SELECTED THEMES IN CANON LAW
Code	P7363
Pre-requisite	None
Lecturer	Rev Dr Brendan Daly PhD, JCD
NZ Credit Value	NZQA NQF Level 7 (15 credits)

Canon law is a practical application of the official theology of the Catholic Church.



This course unit serves as the primary way of acquainting students with the canonical tradition of the Church in the non-sacramental areas of Church life. As such, it is a particular expression of the theology of Church studied in Systematic and Pastoral Theology.

Duration: 12 teaching weeks: 17 Feb – 19 Jun
(incl breaks) **Semester One 2020**

When: Thursday 9am – 10am
Friday 9am – 11am
A total of 3 hours per week

Mode of Study: Available to both on-campus and distance students.

Individual Paper Fees: NZ\$730.00 - NZ Citizen/ Resident
NZ\$745.00 - International Student

THEOLOGY

Title	THE TRINITY
Code	T7333
Pre-requisite	T7101 Introduction to Theology
Lecturer	Rev Dr Mervyn Duffy SM, BSc, STD
NZ Credit Value	NZQA NQF Level 7 (15 credits)

Examine systematically, a doctrine that stands at the very heart of Christian belief.



The purpose of this unit is to focus exclusively on the Church's teaching on the mystery of the Holy Trinity. In so doing it will want to demonstrate the profound soteriological and existential consequences of this doctrine to the way Christians live their life.

Duration: 12 teaching weeks: 17 Feb – 19 Jun
(incl breaks) **Semester One 2020**

When: Tuesday 10am – 12noon
Wednesday 3pm-4pm
A total of 3 hours per week

Mode of Study: Available to both on-campus and distance students.

Individual Paper Fees: NZ\$730.00 - NZ Citizen/ Resident
NZ\$745.00 - International Student

PHILOSOPHY

Title **ANCIENT AND EARLY MEDIEVAL PHILOSOPHY**

Code W7106

Pre-requisite None

Lecturer David Legg PhD

NZ Credit Value NZQA NQF Level 5 (15 credits)

Philosophy sets out to ask and answer radical questions about God, the world, and human life.



The course unit starts where it all began, with the ancient Greeks, and traces the main developments of Western philosophy into the early Medieval period.

Duration: 12 teaching weeks: 17 Feb – 19 Jun
(incl breaks) **Semester One 2020**

When: Thursday 10am – 12noon
Thursday 1pm – 2pm
A total of 3 hours per week

Mode of Study: Available on-campus only.
No distance mode.

Individual Paper Fees: NZ\$730.00 - NZ Citizen/ Resident
NZ\$745.00 - International Student

Title **FROM DESCARTES TO KANT**

Code W7309

Pre-requisite Both W7106 and W7109

Lecturer Rev Dr John Owens SM, PhD

NZ Credit Value NZQA NQF Level 7 (15 credits)

We study “modernity”, the philosophical approach which led to the Western Enlightenment, and eventually to the rise of Western secular society.



This course unit covers the history of thought in the West from the time of Descartes (early 17th century) to the time of Kant (end of the 18th century).

Duration: 12 teaching weeks: 17 Feb – 19 Jun
(incl breaks) **Semester One 2020**

When: Wednesday 1pm – 3pm
Thursday 3pm – 4pm
A total of 3 hours per week

Mode of Study: Available to both on-campus and distance students.

Individual Paper Fees: NZ\$730.00 - NZ Citizen/ Resident
NZ\$745.00 - International Student

PHILOSOPHY

Title **METAPHYSICS**

Code W7331

Pre-requisite Both W7106 and W7109

Lecturer Rev Dr John Owens SM, PhD

NZ Credit Value NZQA NQF Level 7 (15 credits)

Consider the perennial questions of being and existence, God and the human soul.



This course unit introduces students to the Thomistic tradition of enquiry into God and reality. It compares the approach of Aquinas to its main competitors, and notes the significance of Thomism for Catholic theology.

Duration: 12 teaching weeks: 17 Feb – 19 Jun
(incl breaks) **Semester One 2020**

When: Monday 1pm – 3pm
Friday 11am – 12noon
A total of 3 hours per week

Mode of Study: Available to both on-campus and distance students.

Individual Paper Fees: NZ\$730.00 - NZ Citizen/ Resident
NZ\$745.00 - International Student

IMPORTANT DATES

This page lists the key dates for the academic year and important enrolment deadlines.

Semester One 2020

14 Feb	Orientation morning
17 Feb	First day of classes
21 Feb	Inaugural Mass
21 Feb	Final date for change of course without penalty
28 Feb	Final date for payment of fees
28 Feb	Final date for withdrawal without penalty
30 Mar - 17 Apr	Mid-semester Break (no classes)
28 April	Enrolments open for Semester 2
11 - 15 May	Assignment Week (no classes)
22 May	Enrolments close for Semester 2
8 Jun	Last day of classes
9 – 19 Jun	Study break/ Exam week
19 Jun	End of Semester 1

Semester Two 2020

13 Jul	First day of classes
17 Jul	Final date for change of course without penalty
24 Jul	Final date for payment of fees
24 Jul	Final date for withdrawal without penalty
24 Aug - 4 Sep	Mid-semester Break (no classes)
14 Sep	Enrolments open for 2021 Semester One courses
28 Sep – 2 Oct	Assignment Week (no classes)
27 Oct – 6 Nov	Study break/ exam week
23 Oct	Lectures end for Semester 2
6 Nov	End of Semester 2
20 Nov	Enrolments close for 2021 Semester One courses
4 Dec	College closes for 2020

WEEKLY COURSE TIMETABLE – SEMESTER ONE 2020

	MONDAY	TUESDAY	WEDNESDAY	THURSDAY	FRIDAY
9 - 10 AM	L7220 TC Introduction to Preaching	A7132 ES Ecclesiastical Latin	E7200 BT Methods in Christian Ethics L7220 TC Introduction to Preaching	P7363 BD Selected Themes in Canon Law	P7363 BD Selected Themes in Canon Law
10 - 11 AM	B7110 SH Introduction to Biblical Studies H7383 MR NZ Catholics	L7100 JT Introduction to Christian Worship T7333 MD Trinity	E7200 BT Methods in Christian Ethics L7220 TC Introduction to Preaching	W7106 DL Ancient and Early Medieval Philosophy B7368 KW Johannine Literature	P7363 BD Selected Themes in Canon Law
11 AM - 12	B7110 SH Introduction to Biblical Studies H7383 MR NZ Catholics	L7100 JT Introduction to Christian Worship T7333 MD Trinity	E7200 BT Methods in Christian Ethics	W7106 DL Ancient and Early Medieval Philosophy B7368 KW Johannine Literature	W7331 JO Metaphysics A7132 ES Ecclesiastical Latin
12 - 1 PM	LUNCH	LUNCH	LUNCH	LUNCH	MASS/ SHARED LUNCH
1-2 PM	A7132 ES Ecclesiastical Latin W7331 JO Metaphysics	L7100 JT Introduction to Christian Worship	H7110 MR The Early Church W7309 JO Descartes to Kant	W7106 DL Ancient and Early Medieval Philosophy MEETING ROOM	
2-3 PM	W7331 JO Metaphysics	H7110 MR The Early Church	H7110 MR The Early Church W7309 JO Descartes to Kant	B7110 SH Introduction to Biblical Studies H7383 MR NZ Catholics	
3-4 PM		B7368 KW Johannine Literature	T7333 MD Trinity	W7309 JO Descartes to Kant	

WEEKLY COURSE TIMETABLE – SEMESTER TWO 2020

	MONDAY	TUESDAY	WEDNESDAY	THURSDAY	FRIDAY
9 - 10 AM	P7101 <i>TC</i> Introduction to Pastoral Theology	P7376 <i>TC</i> The Psychology of Religious Vocation T7101 <i>RF</i> Introduction to Theology	E7346 <i>BT</i> Marriage, Family and Sexual Ethics P7101 <i>TC</i> Introduction to Pastoral Theology	P7235 <i>SH</i> Maori Pastoral Care	P7235 <i>SH</i> Maori Pastoral Care
10 - 11 AM	T7231 <i>MD</i> The Person and Work of Christ W7310 <i>JO</i> Kant to Postmodernism	W7207 <i>JO</i> Logic and Critical Thinking	E7346 <i>BT</i> Marriage, Family and Sexual Ethics P7101 <i>TC</i> Introduction to Pastoral Theology	B7214 <i>KW</i> Pentateuch P7362 <i>BD</i> Canon Law and the Sacraments	P7235 <i>SH</i> Maori Pastoral Care
11 AM - 12	T7231 <i>MD</i> The Person and Work of Christ W7310 <i>JO</i> Kant to Postmodernism	W7207 <i>JO</i> Logic and Critical Thinking	E7346 <i>BT</i> Marriage, Family and Sexual Ethics	B7214 <i>KW</i> Pentateuch P7362 <i>BD</i> Canon Law and the Sacraments	P7362 <i>BD</i> Canon Law and the Sacraments
12 - 1 PM	LUNCH	LUNCH	LUNCH	LUNCH	MASS/ SHARED LUNCH
1-2 PM	B7214 <i>KW</i> Pentateuch		T7231 <i>MD</i> The Person and Work of Christ W7310 <i>JO</i> Kant to Postmodernism	P7376 <i>TC</i> The Psychology of Religious Vocation T7101 <i>RF</i> Introduction to Theology	
2-3 PM	L7200 Liturgical Rites		L7200 Liturgical Rites	P7376 <i>TC</i> The Psychology of Religious Vocation T7101 <i>RF</i> Introduction to Theology	
3-4 PM	L7200 Liturgical Rites			W7207 <i>JO</i> Logic and Critical Thinking	

FULL LIST OF PAPERS

The full range of papers taught at Good Shepherd College follow. Not all are available in any one year. Check page 10 for papers taught this semester.

HUMANITIES

A7132 Ecclesiastical Latin

Provides students with the basic grammatical and syntactical knowledge that will lead to a grasp of the Latin ecclesiastical writings.

BIBLICAL STUDIES

B7110 Introduction to Biblical Studies

Introduces the student to the Bible, its content and literary genres and to the methodologies of biblical reading, study and interpretation.

B7214 Pentateuch

As Jews and Christians have a special regard for the first five books of the Bible this paper looks at factors that influenced our understanding of them.

B7229 Wisdom Literature

Explores the place of wisdom in Ancient Israel and the theological issues it raises with than faith community.

B7231 Prophetic Literature

Examines the literary forms and theological contact of Israel's prophetic books, in their historical, cultural and religious settings.

B7254 Synoptic Gospels

Enables students to develop the ability to research in Biblical Studies through reading the Synoptic Gospels in the light of relevant contemporary scholarly literature.

B7326 Psalms

Studies Israel's poetic literature and practice of prayer and worship as represented in the Psalter.

B7368 Johannine Literature

Examines the historical context, literary forms and theological content of the Gospel and Letters of John, and their application to a range of spiritual and pastoral concerns.

CHRISTIAN ETHICS

E7100 Sources and Principles of Christian Ethics

Introduces students to theological reflection on the ethical aspects of Christian life and discipleship.

E7200 Methods in Christian Ethics

Introduces students to methods and principles of Christian ethical reflection and moral theology. It provides a methodological basis for specialised studies in Christian ethics.

E7345 Justice, Human Life and Society

Examines the ethical issues of human community, sociality and globalisation, with special focus on the requirements of social justice.

E7346 Marriage, Family and Sexual Ethics

Explores the human, theological and ecclesial understandings of human sexuality, and their implications for personal relationships and Christian marriage.

E7350 Christian Anthropology and Biomedical Ethics

Introduces the student to the ethical issues involved in contemporary medicine and health care, with a view to moral decision making in keeping with Christian principles.

CHURCH HISTORY

H7110 History of the Early Church

Provides students with an overview and general understanding of the early centuries of Christian history.

CHURCH HISTORY

H7240 History of the Church in the Middle Ages

Enables students to appreciate a wider historical context surrounding their theological studies.

H7350 The Reformers and the Reformation

Introduces students to the European Reformations of the sixteenth century as a development in history of universal importance.

H7383 NZ Catholics: Their Story

Provides a survey of the history of the Catholic Church in New Zealand and a context for other theological studies relating to the NZ Church.

LITURGICAL STUDIES

L7100 Introduction to Christian Worship

Introduces students to concepts that provide a foundation for the study of Christian worship.

L7200 Liturgical Rites

Builds on the Introduction to Worship with a particular focus on rites other than those of Christian initiation.

L7220 Introduction to Preaching

Gives a theology of preaching and introduces students to the foundational skills needed for the preparation and delivery of speeches, homilies, and sermons.

PASTORAL THEOLOGY AND PRACTICE

C7249 Human Development and Pastoral Counselling. Provides for an understanding of the physical, social, psychological and spiritual dimensions of the human life cycle through all the stages from infancy to old age.

P7101 Introduction to Pastoral Theology

Gives a biblical and theological overview of the foundations of Christian pastoral ministry with particular reference to the New Zealand context.

P7235 Maori Pastoral Care

Provides students with an understanding of and an empathy for their culture, thought patterns and religious motivations, so that they can provide pastoral ministry to Māori people.

P7282 Supervised Ministry

Incorporates learning experiences at a practical level as well as giving opportunity to reflect on both the practice and theory of ministry.

P7362 Canon Law and the Sacraments

Demonstrates how general canonical principles and concepts apply in the area of the sacraments as these are studied in units in Systematic Theology, Liturgy and Pastoral.

P7363 Selected Themes in Canon Law

Serves as the primary way of acquainting students with the canonical tradition of the Church in the non-sacramental areas of Church life.

P7376 The Psychology of Religious Vocation

Studies the human and spiritual components of an ecclesial vocation.

SPIRITUALITY

S7102 Introduction to Christian Spirituality

Develops a comprehensive introduction to, and overview of, the topic of Christian Spirituality focussing on its biblical, theological and historical premises and practice from a denominational perspective.

S7260 Formation in Prayer and Prayerfulness

Focuses on the understanding and experience of prayer as a core element within the study of Christian Spirituality.

S7350 Christian Spiritual Wisdom

Presents a survey of the major historical schools of spirituality and prayer within the Western Christian Spiritual Tradition and explores their contribution to contemporary expression of Christian Spirituality.

THEOLOGY

T7101 Introduction to Theology

Introduces students to the nature and tasks of theology and to theological methodology. A foundation for all future theology courses.

T7217 The Church

Introduces students to a central theme of theology, viz. that faith is lived within a community of believers. It prepares students for later units in the church's sacraments and ministry.

T7231 The Person and Work of Christ

Explores the central concern of Christian theology – who Jesus is and what he did.

T7324 Baptism and Confirmation

Shows how Baptism is the first Christian sacrament and how it mediates Christian faith and Christian identity, in Christ and in the Church.

T7325 Anointing and Reconciliation

Applies the themes of sacramentality, a principal aspect of theology in the Christian tradition, to two fundamental areas of human life: sinfulness and sickness.

T7326 The Eucharist

Helps students deepen their appreciation of the connection between the doctrine of the Eucharist, worship and witness in the Christian life.

T7327 The Sacrament of Marriage

Explores marriage from the perspective of sacramental theology. It helps students to appreciate the interaction between theology, society and the human person.

T7328 Theology of Priesthood

Explores the history, theology and practice of ministry in the church in the sacrament of Holy Order.

T7333 The Trinity

Focuses exclusively on the Church's teaching on the mystery of the Holy Trinity.

T7337 Christian Anthropology and Grace

Provides students with a theological understanding of the human person and the ability to relate Christian anthropology to the theology of grace.

PHILOSOPHY

W7106 Ancient and Early Medieval Philosophy

Provides an introduction to philosophy by considering its origins in Greek philosophy and its encounter with Christian thought during the early Middle Ages.

W7109 Medieval and Early Modern Philosophy

Covers the history of thought in the West during the Middle Ages and up to Locke, and examines how and why philosophical enquiry changes during the period.

W7207 Logic and Critical Thinking

Provides structured, practical instruction in the nature of and skills of critical thinking.

W7222 Moral Philosophy

How should we live? Look at the ways in which the question has been posed in philosophical history, the issues it has thrown up, and major answers offered.

W7309 From Descartes to Kant

Covers the history of thought in the West from the time of Descartes (early 17th century) to the time of Kant (end of the 18th).

W7310 From Kant to Postmodernism

Examines the critical tradition of philosophy in the modern period that has largely defined itself over and against religion and authority.

W7331 Metaphysics

Addresses the most fundamental questions at stake in our understanding of reality in all its forms, by considering the perennial questions of being and existence, God and the human soul.

W7332 The Human Person

Examine what it is to be human, looking at major texts in philosophical anthropology, taking a variety of perspectives into account.

2020 FEES

Individual Paper Costs

NZ Citizen/ Resident Fee: NZ \$TBC

International Student Fee*: NZ \$TBC

All fees are quoted in New Zealand Dollars (\$NZ) and include NZ Goods and Services Tax (GST).

Tuition fees are set annually by the College.

Fees are subject to change.

Enrolment Fee

When you submit your enrolment a non-refundable deposit of \$100 is payable.

If you enrolled after the closing date a *Late Enrolment Fee* will be added to your invoice.



Course Fees Due Date

In the first week of the semester the College posts invoices outlining total fees to be paid (including a Late Enrolment Fee if you enrolled after the closing date).

2020	Semester 1	Semester 2
Final date for payment	28 Feb 20	24 Jul 20

Payment options

In Person	Pay by cash or cheque. Eftpos is not available.
Cheque in the Mail	Make out the cheque to Good Shepherd College
Internet Banking	Good Shepherd College Account 02-0200-0299983-000

25 INTERNATIONAL STUDENTS

If you are living in New Zealand, are sponsored by a Diocese or religious institution and would like to study at Good Shepherd College, get in touch with us. In addition to the **admission requirements** above there are other criteria that need to be met and these are outlined on *page 10*.

International student support

Mons. Brendan Daly, brendan.daly@xtra.co.nz can provide practical guidance or advice and can help with any issue or concern.



Code of Practice for the Pastoral Care of International Students.

Good Shepherd College has agreed to observe and be bound by the Code of Practice for the Pastoral Care of International Students.

If you have a complaint the first step is to contact Mons. Brendan Daly. While he can guide you through College procedures, a copy of Formal Complaint Procedures can be found on the Home Page of Moodle.

If your complaint is not resolved, contact the NZ Qualifications Authority. You can submit your complaint query on the NZQA website, or send an email to gadrisk@nzqa.govt.nz

DISTANCE STUDENTS

Good Shepherd College runs a blended learning environment which means that distance learning runs in parallel with the on-campus class.

- Start and finish the semester in step with the on-campus course.
- The class follows the normal semester timetable, including breaks as outlined in the Academic Calendar.
- Students do not need to buy textbooks (*unless advised by the lecturer before they enrol*), as readings are available online as pdfs or e-books.



- It's no longer necessary for course material to be posted as it's available to online in Moodle, the College's learning site <http://www.gsc.ac.nz/moodle2/>
- Distance students are tested and graded just like on-campus students i.e. marked assessment tasks throughout the semester that make up your final grade, possibly including an exam scheduled in exam week.
- All students should expect to complete the course and submit assessment materials within the semester.
- Papers are completed each semester.

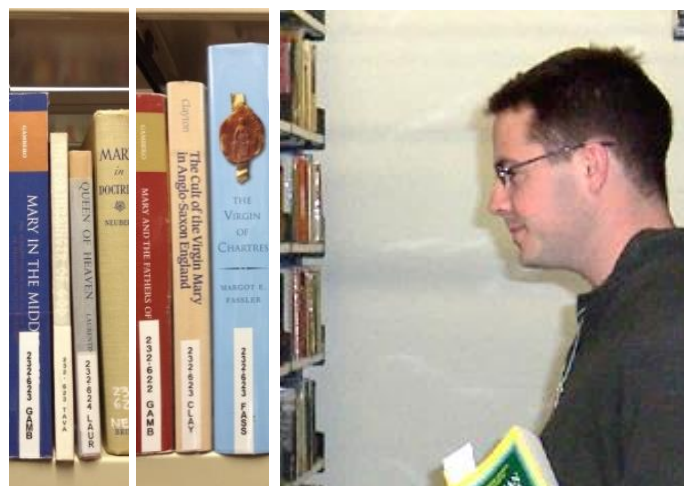
Support from your lecturer

Your lecturers are there to:

- Help you through your coursework.
- Ensure you've understood material.
- Check your progress and provide feedback.
- Mark and return graded assessments.

Always ask for help if you need it.

Your lecturers' details and contact times can be found in the Course Unit Booklet located at the top of every course page in the Moodle learning website.



Extra Support for Distance Students

The Distance Coordinator is there to help distance students succeed by ensuring they are able to connect and engage online successfully when using the online learning site, Moodle. Email support@gsc.ac.nz

Online Attendance

For distance students attendance is met by completing online tasks during the week specified. An Attendance Register is kept by the lecturer who marks the completion of online tasks each week. You can miss *no more* than 2 weeks of tasks otherwise you will fail the paper, regardless of how well you've been doing at assessment tasks.

ACADEMIC EXPECTATIONS

How much time should be set aside?

For each paper, plan for 10 hours per week on coursework and associated study, including 3 hours of lectures each week for on-campus students. (Distance students should allocate 3 hours to reading/watching the lecture notes).

Where do I find the course syllabus?

Lecturers provide the course syllabus in the first week, referred to as the Course Unit Booklet. It outlines course goals/learning outcomes, provides a description of graded assessment work (with due dates) and lists recommended readings.

How do I get hold of learning materials?

Moodle is the College's web-based learning site and each week *both* distance and on-campus students go there to read course material and do tasks set by their lecturer.

To use Moodle all you really need is access to a computer able to run a broadband internet connection and sufficient computer skills to:

- Send and receive emails.
- Open word, pdf, PowerPoint, video files.
- Type assignments in Word.
- Reply to the lecturers' questions in either a forum or quiz format in Moodle.
- Hand in and collect your assignment online

Library Resources

GSC students have access to two Libraries.

- The Colin Library - at GSC College
- The Veech Library - in the Catholic Institute of Sydney, Australia

These libraries offer:

- Catalogues
- Print and Electronic Books
- Print and Electronic Journals
- Databases

How are courses assessed?

Papers are completed each semester.

There are usually three marked assessment tasks each semester that make up your final grade – although some courses may have four.

Graded assessment tasks may be:

- Internal assessment only (e.g. essay, critical review, presentation) that are scheduled throughout the semester.
- A combination of internal assessment during the semester and an examination held in exam week at the end of the semester.

If exams are part of your assessment, it's essential that you are available to sit them on the day they're scheduled within exam week. Refer to the Academic Calendar.

What if I miss a few lectures or weekly tasks?

While there is leeway to miss a few lectures (or online tasks if you're a distance student), students who do not meet the **minimum 80% attendance requirement** will fail the paper, regardless of how well they have been doing at the assessment tasks. This is one of the requirements placed upon Good Shepherd College as a government-funded Tertiary organisation.

On-campus students are to be present for at least 29 hours of lectures i.e. absent for *no more* than 7 hours of lectures.

Distance students need to complete at least 10 (out of a total of 12) online tasks in the week their lecturer set them. i.e. miss *no more* than 2 weeks.

COURSE PLANNING CHANGING ENROLMENT REFUNDS / WITHDRAWALS

Course Planning Advice

You have the option of discussing your plans with an advisor.

Holy Cross seminarians are to contact:

Br Mark McKeon

pastoral@holycross.org.nz; 09 360 6754

All other students contact Fr Michael O'Connor dean@gsc.c.nz

Changing your enrolment

At the start of each semester you can drop, swap or edit your courses by advising the Registrar registrar@gsc.ac.nz before the deadlines below expire.

The following will NOT be accepted as formal notice of changing your enrolment:

- Not paying your fees
- Ceasing to attend lectures
- Verbally advising a member of staff

Failure to notify the Registrar could result in the following that we all want to avoid receiving a fail grade on your academic record, or not receiving grades for papers you studied all semester but are not formally enrolled in.

You are advised to seek advice from StudyLink www.studylink.govt.nz to discuss the implications that changing your enrolment may have on your entitlement to financial support. Particularly if you are dropping papers and rely on income from StudyLink that is based on you maintaining your full-time status.

2020	Semester 1	Semester 2
Final date for change of course without penalty	21 Feb 20	17 Jul 20

If you are an international student, find out whether dropping a course has implications for your Study Visa. You can also contact Mons. Brendan Daly for guidance. brendan.daly@xtra.co.nz

Refunds and Withdrawals

Withdrawal from a course occurs when a student's circumstance is such that s/he cannot study and anticipates no change in the circumstance in the foreseeable future.

This provision allows the student to withdraw from the course and to re-enrol when circumstances are more favourable.

A student may withdraw without penalty from a course only if the notice of withdrawal is received by the Registrar of Good Shepherd College by **4.00pm** on the **last date of withdrawal without penalty** as specified in the Academic Calendar.

After that date the normal outcome of a withdrawal is to receive a fail grade.

Application can be made by the student to the Sydney College of Divinity if there are grounds for a compassionate acceptance of the withdrawal.

If the withdrawal occurs up to 4.00pm of the final date of withdrawal, the course unit fee will be refunded (less the enrolment deposit fee).

Beyond this time the fees will not be refunded.

2020	Semester 1	Semester 2
Final date for withdrawal without penalty	28 Feb 20	24 Jul 20

ACADEMIC CALENDAR – SEMESTER ONE 2020

	Mon	Tue	Wed	Thu	Fri
GSC opens	20 Jan	21 Jan	22 Jan	23 Jan	24 Jan
	27 Jan	28 Jan	29 Jan	30 Jan	31 Jan
	3 Feb	4 Feb	5 Feb	6 Feb	7 Feb
	10 Feb	11 Feb	12 Feb	13 Feb	14 Feb
SEMESTER ONE					
Week 1	17 Feb	18 Feb	19 Feb	20 Feb	21 Feb
Week 2	24 Feb	25 Feb	26 Mar	27 Feb	28 Feb
Week 3	2 Mar	3 Mar	4 Mar	5 Mar	6 Mar
Week 4	9 Mar	10 Mar	11 Mar	12 Mar	13 Mar
Week 5	16 Mar	17 Mar	18 Mar	19 Mar	20 Mar
Week 6	23 Mar	24 Mar	25 Mar	26 Mar	27 Mar
Mid-Sem 1	30 Mar	31 Mar	1 Apr	2 Apr	3 Apr
Holy Week	6 Apr	7 Apr	8 Apr	9 Apr	10 Apr
Mid-Sem 2	13 Apr	14 Apr	15 Apr	16 Apr	17 Apr
Week 7	20 Apr	21 Apr	22 Apr	23 Apr	24 Apr
Week 8	27 Apr	28 Apr	29 Apr	30 Apr	1 May
Week 9	4 May	5 May	6 May	7 May	8 May
Assg Wk	11 May	12 May	13 May	14 May	15 May
Week 10	18 May	19 May	20 May	21 May	22 May
Week 11	25 May	26 May	27 May	28 May	29 May
Week 12	1 Jun	2 Jun	3 Jun	4 Jun	5 Jun
Study &	8 Jun	9 Jun	10 Jun	11 Jun	12 Jun
Exams	15 Jun	16 Jun	17 Jun	18 Jun	19 Jun
Inter	22 Jun	23 Jun	24 Jun	25 Jun	26 Jun
Semester	29 Jun	30 Jun	1 Jul	2 Jul	3 Jul
Break	6 Jul	7 Jul	8 Jul	9 Jul	10 Jul

Jan 27	Auckland Anniversary Day	Apr 27	Anzac Day (Monday observation)
Jan 28	College opens for 2020	Apr 28	Enrolments Open for Semester II courses
Feb 06	Waitangi Day	May 1	Patronal Feast-day Mass
Feb 14	Orientation Morning	May 11 - May 15	Assignment / study week
		May 22	Enrolments Close for Semester II courses
Feb 17	Lectures commence for Semester I	Jun 1	Queen's birthday
Feb 21	Inaugural Mass	Jun 5	Graduation
Feb 21	Final date for change of course without penalty	Jun 8	Lectures end for Semester I
Feb 28	Final date for payment of Semester I fees	Jun 09 - Jun 19	Study & examinations
Feb 28	Final date for withdrawal without penalty	Jun 19	End of Semester 1
		Jun 24	Examiners' Meeting

STAFF CONTACT LIST

There are many ways to access academic support while you study at the College.

Support from your lecturer

Your lecturers are there to help you through your coursework, make sure you have understood the study material and monitor your progress.

Your lecturer to you in the online learning site, Moodle details will be advised for each course you enrol in. Your lecturer will mark your assessments, check your progress and provide feedback. Your lecturer also selects your course material, including essential reading and makes this available.

If there is something you don't understand or if you want more feedback, contact your lecturer. Always ask for help if you need it.

Contact times for lecturers vary and can be found in the Course Unit Booklet located at the top of every Moodle Course Page. If you find your lecturer is not available when you contact them, leave a message and they will get back to you as soon as they can.

Extra Support for Distance Students

The Distance Coordinator is there to help distance students succeed by ensuring they are able to connect and engage online successfully when using the online learning site, Moodle. Email support@gsc.ac.nz

Support for International Students

The International Pastoral care person is Brendan Daly. Email brendan.daly@xtra.co.nz for practical guidance or advice. He can help you with any issue, concern or complaint

If your complaint is not resolved, contact the NZ Qualifications Authority. You can submit your complaint query on the NZQA website, or send an email to qadrisk@nzqa.govt.nz

Biblical Studies

Rev Dr Kevin Waldie. waldie@gsc.ac.nz

Dr Sarah Hart shart@gsc.ac.nz

Christian Ethics

Rev Dr Bernard Teo teo@gsc.ac.nz

Church History

Mayte Ramos mramos@gsc.ac.nz

Humanities

Sr Elizabeth Snedden srsned@gmail.com

Liturgical Studies

Fr John Tollan

Pastoral Theology and Practice

Rev Dr Timothy Costello costello@gsc.ac.nz

Rev Dr Brendan Daly brendan.daly@xtra.co.nz

Philosophy

David Legg

Rev Dr John Owens owens@gsc.ac.nz

Theology

Rev Dr Mervyn Duffy duffy@gsc.ac.nz

Dr Rocio Figueroa rfigueroa@gsc.ac.nz

Acting Principal

Rev Dr Mervyn Duffy duffy@gsc.ac.nz

Dean of Studies

Rev Dr Michael O'Connor oconnor@gsc.ac.nz

Manager – Office and Finance

Karen Cairney karen@gsc.ac.nz

Registrar

Maree Crighton registrar@gsc.ac.nz

Library library@gsc.ac.nz

Mark Hangartner (Librarian)

Lynette Zink (Assistant)

OPENING HOURS

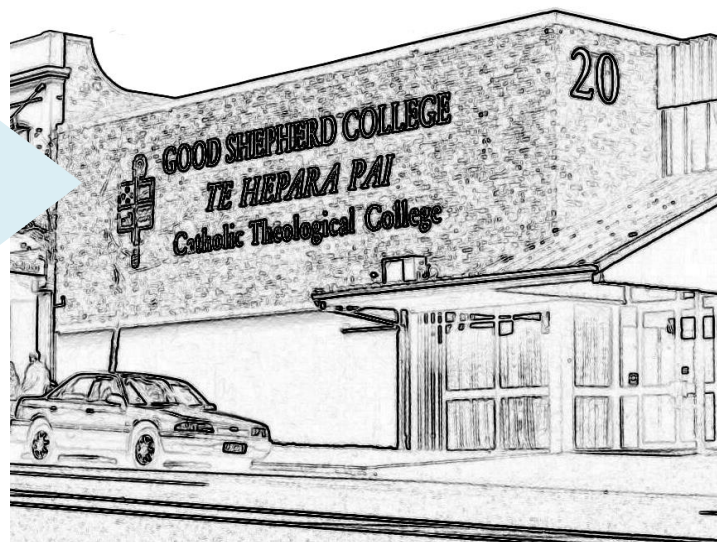
Good Shepherd College
20 Ponsonby Road, Auckland 1011
PO Box 3440, Auckland 1140

During semester: Mon-Fri, 8.30am - 4.30pm
Over breaks: Mon-Fri, 10.00am – 4.00pm

Tel (09) 361 1053

Email admin@gsc.ac.nz

Website www.gsc.ac.nz



RETURNING STUDENTS

Required to enrol online www.gsc.ac.nz/moodle2/

HCS Course Planning

Br Mark McKeon FSC
Holy Cross Seminarians
09 360 6754; pastoral@holycross.org.nz

All Other Students

Fr Michael O'Connor
dean@gsc.ac.nz

NEW STUDENTS

Required to fill in enrolment forms www.gsc.ac.nz

New Student Admission Enquiries

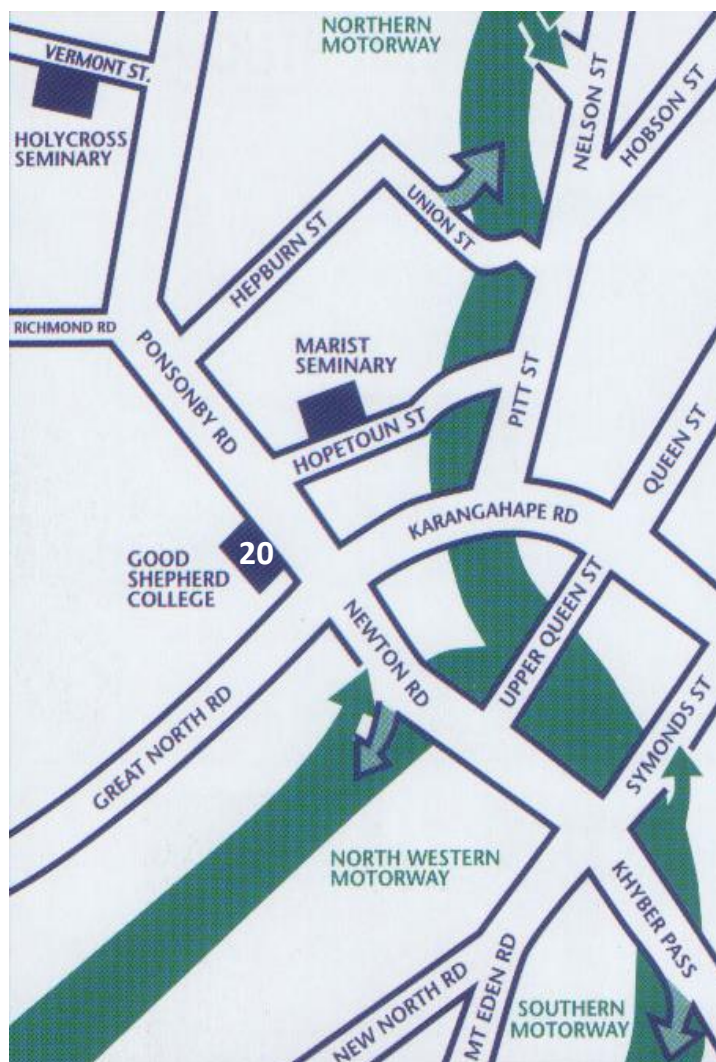
Fr Michael O'Connor

Tel 09 361 1053 ext. 702 Email dean@gsc.ac.nz

Request for Enrolment Forms/ Information

Maree Crighton, Registrar

Tel 361 1053 ext. 701 Email registrar@gsc.ac.nz



FEES GUIDE – 2020

ENROLMENT FEE DEPOSIT

Non-refundable deposit: NZ\$100.00

If you enrolled after the closing date a **Late Enrolment Fee** will be added to your invoice.

INDIVIDUAL PAPER COSTS

NZ Citizen/ Resident Fee: NZ\$730.00

International Student Fee*: NZ\$745.00

International students must be sponsored by a Diocese or religious institution and meet admission conditions.

EASY WAYS TO PAY

In Person	Pay by cash or cheque. Eftpos is not available.
Cheque in the Mail	Make out the cheque to Good Shepherd College
Internet Banking	Good Shepherd College Account 02-0200-0299983-000